

GET FREE ACCESS TO OUR ONLINE EDITION! →

NUTS AND VOLTS You Tube

[STORE](#) [MAGAZINE](#) [SUBSCRIPTIONS](#) [ELECTRONET](#) [COMMUNITY](#) [CONTACT](#)

DIGITAL EDITION ▾

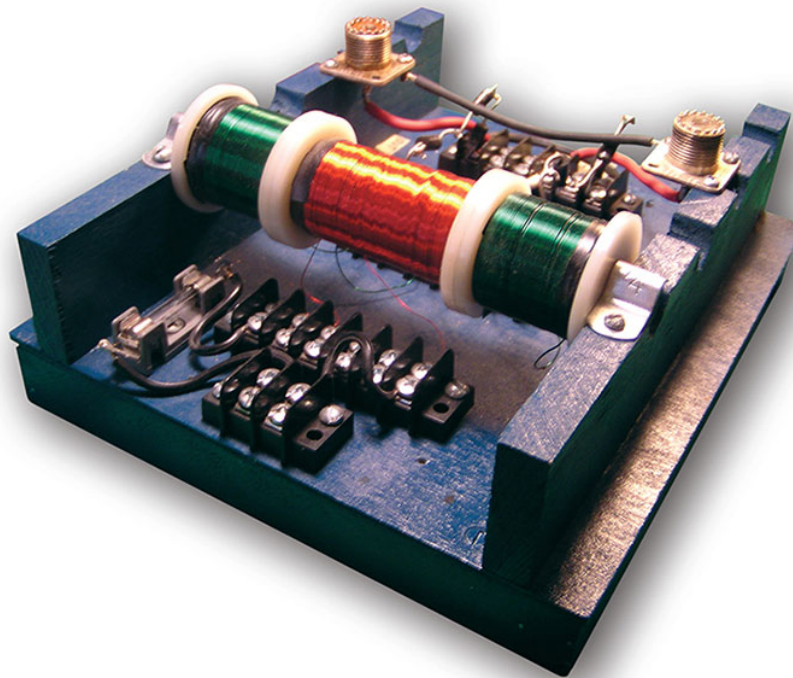


Endless Possibilities
With Sensor Designs

MICROCHIP

EXPLORE THE POSSIBILITIES >>

The advertisement features a woman in a white shirt standing with her hands open, surrounded by various colorful icons representing different sensor technologies. The background is dark grey, and the text is in white and green. The Microchip logo is prominently displayed on the right side of the banner.



NUTS & VOLTS MAGAZINE (FEBRUARY 2006)

THE MAGNETIC AMPLIFIER

By [George Trinkaus](#)

[View In Digital Edition](#) 

[» Skip to the Extras](#)

A LOST TECHNOLOGY OF THE 1950S

Anyone can build it!

Most folks believe that first came the vacuum tube and right on its heels came its successor, the transistor – an historical fact, correct? Not really. Another competitive control technology developed by US and Nazi engineers came in between. It was the magnetic amplifier. Rugged, dependable, EMP-proof, and capable of handling greater electrical powers than either transistor or tube, the magnetic amplifier is a simple device that can be built by anyone.

By the 1950s, the magnetic amplifier was not just an experimental dream languishing in some inventor's notebook. Nor was this ingenious technology sitting unexploited in patent archives. The mag amp was in manufacture in a number of versions and had a clique of boosters, including many electronics engineers, especially within the US Navy.

The mag amp is an American invention and has been used in heavy electrical machinery regulators since 1900. In the 1940s, the Germans took the American's relatively crude device, assigned their best scientists, invested millions, and developed it into a faster, lighter electronic tool competitive with the vacuum tube in performance but more simple and dependable. It's also much more rugged. A mag amp can be made to be nearly indestructible.

The Germans used the mag amp in electric brakes for trucks, streetcars, and locomotives. They used it for high-voltage utility-power controls and even for early computers.

Appreciating its indestructibility, the Nazi military used it in gun stabilizers, in automatic pilots, and in missile-guidance, including the rocket stabilizer and steering systems of the V-2.

After the war – like German rocketry itself – the mag amp emigrated to the US, where it got further development by enthusiastic American engineers. By 1951, a Navy engineer could write, “Electronics engineers are now forced to concede recognition of the magnetic amplifier, as it has demonstrated its value beyond question in many fields dominated by the electron tube.”

SIMPLICITY

The mag amp, like the vacuum tube and transistor, is an electrical control valve. When a smaller circuit controls another circuit’s larger flow, that’s the definition of an “amplifier.”

A mag amp can be put in series with any circuit carrying an alternating current and control that flow. No external power supply is required to run the device. The simple mag amp is just a core of iron or ferrite with some coils of wire wound around it.

One other basic component is the rectifier. Today, rectifying diodes are compact, easily available, and cheap. The old selenium rectifiers used back in the 1950s were large, cumbersome, and expensive.

A variety of ferrite core materials are also available to today’s builders.

With some spools of wire, a ferrite rod, and a couple of diodes, you can throw together a little high-frequency mag amp on a Sunday afternoon.

Compare the construction challenge of a vacuum tube or transistor. And the mag amp can handle voltages and currents that you would never put into the average transistor or tube.

HOW IT WORKS

The mag amp is a sort of variable choke. It controls the impedance (opposition) to alternating current in a coil by controlling the magnetic condition of the core on which the coil is wound. This is done by energizing another winding on the core called a control coil. Depending on the energy in the control coil, the core's permeability (its receptivity to magnetism) can be varied by degrees, thus controlling a larger AC flow.

Fully energized, the control coil can reduce the permeability of the core to zero, in which case the core is said to be saturated. Then it becomes so magnetically unresponsive it's like the core has been removed.

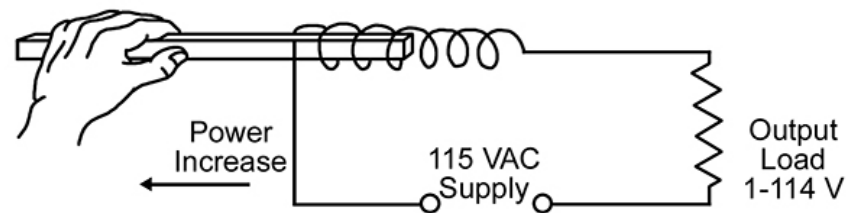


FIGURE 1. Principle of Oeration.

Figure 1 is a way of showing the principle. With the core completely within the coil, the impedance to the flow is high, permitting perhaps only a fraction of a volt to appear across the load. Pulling the core out causes the load voltage to rise progressively to 115. Since it took only a few watts of muscular energy to move the iron core within the coil, which may, in turn, control several horsepower, the device is an amplifier.

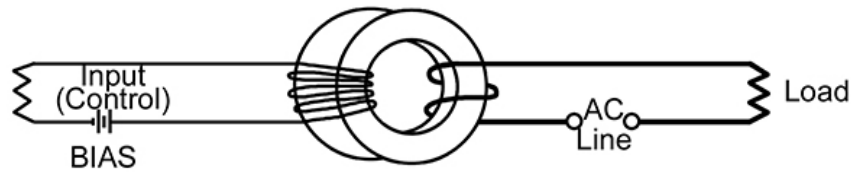


FIGURE 2. Saturable Reactor.

Figure 2 is another demonstration. This qualifies as a saturable reactor. This circuit could be for a dimmer for theater stage lighting. Add a diode, and you have a basic mag amp (see **Figure 3**). The larger coil is the control coil. The smaller is called the loading coil.

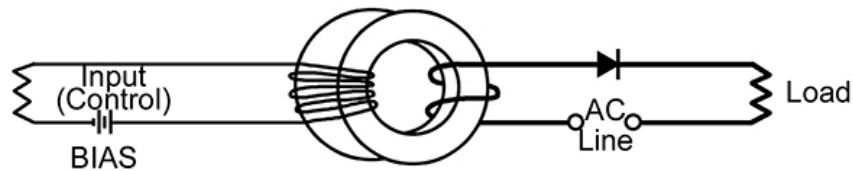


FIGURE 3. Mag Amp.

The diode rectifier makes the load current unidirectional, which assists the control winding in saturation. Considerably less power is now required, making it a more potent amplifier.

This mag amp, however, will function as a step-up transformer, which would be undesirable since it would send energy back into the control circuit. This effect is cleverly cancelled by running the AC through a pair of parallel loading coils which are wound in opposite directions.

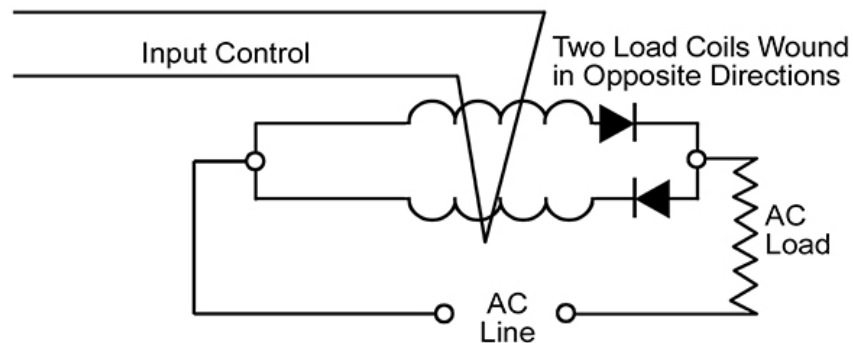


FIGURE 4. Functional Mag Amp.

Figure 4 is your basic functional mag amp represented by the appropriate schematic symbols. The control coil symbol is a single sharp angle-line, but the control coil actually has many more turns than the loading coil.

How many turns? The rule of thumb is control-coil ampere-turns equals loading-coil ampere-turns plus sufficient extra turns to saturate the core. (Much of the how-it-works above is from *Magnetic Amplifiers* by the US Navy, 1951, recently republished.)

USES

The mag amp still has industrial uses in the control and regulation of power utilities and big electric motors, as in locomotives, but its most fascinating applications – mostly forgotten – are in electronics.

The mag amp can modulate, switch, invert, convert, multivibrate, audio-amplify, radio-amplify, frequency-shift, phase-shift, and multiply. Stages can be cascaded. Simple feedback techniques

enable gains in the millions.

The mag amp can even compute. Trouble-proof magnetic binaries replaced the less reliable vacuum tubes used in some early digital computers.

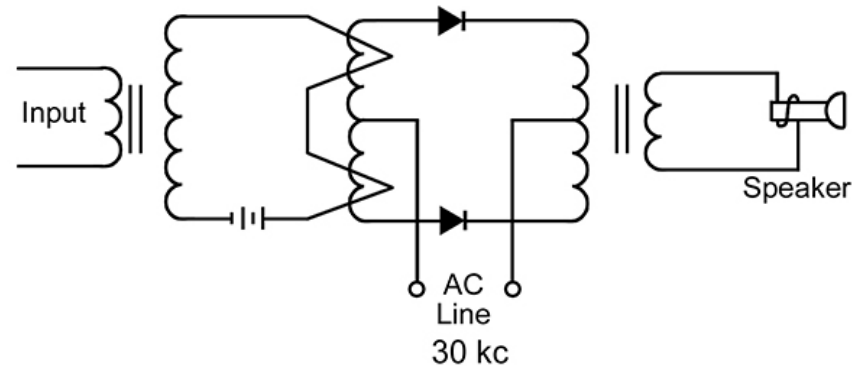


FIGURE 5. Mag-amp Audio Amplifier (push-pull).

Figure 5 shows the incredibly simple circuit for a mag amp audio amplifier. Mag-amp audio would be a challenging pursuit for some adventurous audiophile. But the mag-amp electronics which engaged this writer is in radio.

MAG AMPS IN RADIO

The first patent for a mag amp was in 1903, but little attention was paid until 1916 when radio pioneer E.F.W. Alexanderson seized on the idea as a means of controlling the giant rotary alternators he was using for high-power radio transmitting (at 10,000 to 100,000 cycles). The *Magnetic Amplifier*

Bibliography (by the US Navy, 1951) lists three Alexanderson patents in 1916 and three more in 1920, the last titled “Transoceanic Radio Communication.”

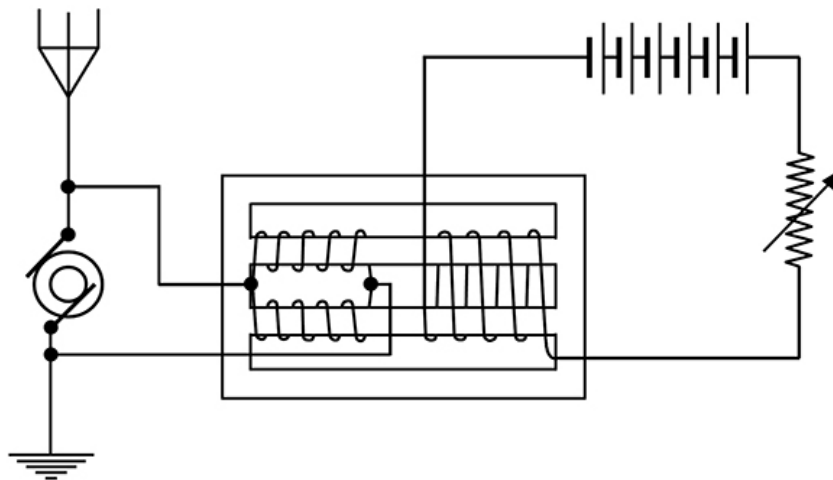


FIGURE 6. GE Mag-amp Modulator by Alexanderson.

The mag amp can turn the alternator on and off for telegraphy and vary the signal for speech modulation (see **Figure 6**).

The frequency limits of an alternator are low, so the mag-amp was reinvented in that era as a frequency multiplier (doubler, tripler), as seen in **Figure 7**. The *Bibliography* cites many radio-transmitter frequency-multiplier patents up through the 1920s. These are simple circuits compared to those of vacuum-tube frequency changers that came later.

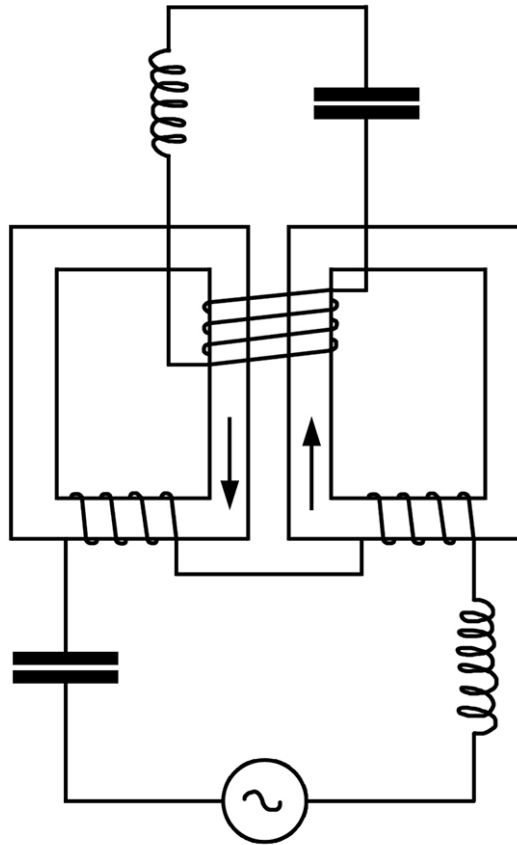


FIGURE 7. Frequency Multiplier.

Early mag amps with solid iron cores never got above a few hundred kilocycles. Powdered-iron cores, the ceramic-iron-oxide composition known as ferrite, and later the ultra-thin magnetic tapes liberated the mag amp, so by the 1950s the limit was up to a megacycle and switching rates were in microseconds, suitable then for computer applications. Techniques for the modulation even of microwave frequencies were also developed in the 1950s (see **Figure 8**).

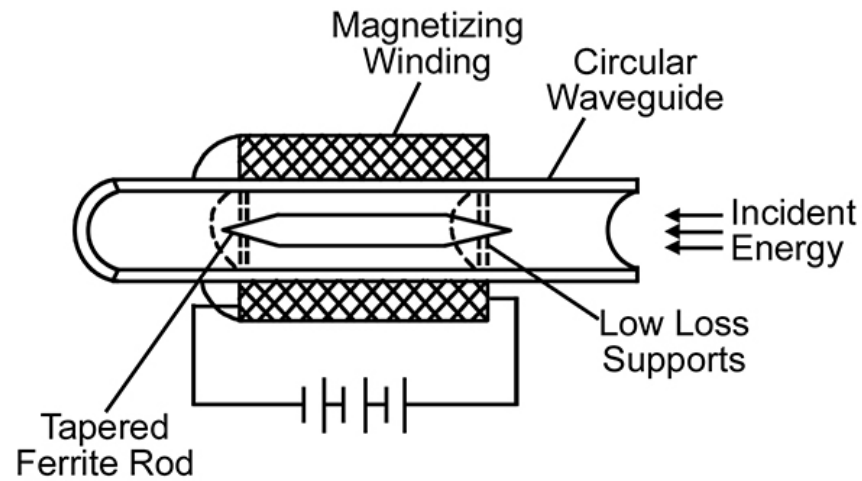
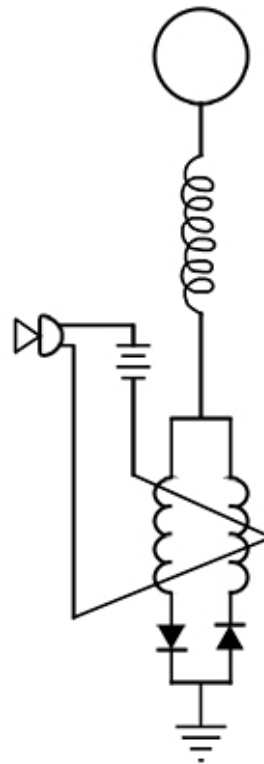


FIGURE 8. Microwave Mag Amp.

MY HOME-BUILT MAG AMP

I wanted to see if a mag amp could modulate a Tesla coil (see **Figure 9**), as Alexanderson modulated his big alternator-transmitter. I used the schematic in **Figure 4**. The Navy booklet, *Magnetic Amplifiers* served as a reference.



Magnetic Amplifier
Modulates Tesla Coil

FIGURE 9. In Tesla Coil Circuit.

I first obtained a ferrite rod (material #33), six inches by just under 1/2-inch diameter. I got it surplus from Alltronics, for about \$5, but it's no longer available, though they do carry a four-inch for \$5 (www.alltronics.com.) Another source for rods is Surplus Sales of Nebraska (www.surplussales.com). From Alltronics I also got spools of magnet wire – #26 for the two loading coils and #30 for the control coil.

I wound my coils, not directly on the ferrite, but on acrylic tubing, 1/2 inch inside diameter (from Tap Plastics), which I could slip over the rod. A section of the tubing and a couple of nylon fender washers from the local hardware store made a well insulated spool or coil form on which to wind the coils on my winding jig. The loading-coil spools were 1-1/8 inch wide, the control coil two inches wide. For the loading coils, I wound 13 layers, 860 turns of the #26 wire, laying on some electrical tape for extra insulation between each layer. I wound the two loading coils in opposite directions. The control coil took 400 feet of the #30 wire.

A mag amp is frequency specific according to the size of its loading coils. (Thus, an audio amp would be quite large.) I wanted 180 kilocycles, and I determined the number of turns experimentally.

For the rectifiers, I used eight 1,000-volt, three-amp 1N4008 diodes, four in each leg (three for a \$1.00, from All Electronics, www.allelectronics.com). The mag amp was now safe to 4,000 volts and could handle the output of my solid-state Tesla coil.

PERFORMANCE

So that I could observe the mag amp's performance with my signal generator and oscilloscope, I replaced the 1N4008s with two low-power signal diodes. In series with the control coil, I put a 12-volt battery and a telegraph key, as a convenient switch. The mag amp is frequency-specific; you design it for a particular range. Keyed on and off, the mag amp showed response from 155 to 200 kilocycles (a range that happens to fall within the license-free experimental radio band called LowFER).

What a versatile device! At a particular frequency, operating the key would increase or decrease the amplitude of the wave as traced on the scope. At another frequency, the keying would shift the frequency back and forth, and at another it would shift the phase. So this one little device, depending on how it was tuned, could do on-off keying (CW), amplitude modulation (AM), frequency-shift keying (FSK), frequency modulation (FM), or phase-shift keying (PSK), including bi-phase-shift keying (BPSK),

which is a common mode of digital transmission. Placed in the ground circuit of my solid-state Tesla-coil, the little mag amp showed that it could do all of the above with more than 3,000 oscillating volts running through it. This would be quite a task for a vacuum tube and probably beyond any transistor.

And I built it myself. **NV**

George Trinkaus' High Voltage Press is at teslapress.com

 Share 67  Like Sign Up to see what your friends like.

COMMENTS



LATEST NEWSLETTERS

FEBRUARY 22, 2018

[Time For Another Clock Project? Really?](#)

[Old Heathkits Never Die, They Just Get Restored](#)

[Take a CAN Bus for a Spin](#)

[ESP8266 NTP Clock](#)

JANUARY 28, 2018

[Does anybody still make their own Printed Circuit Boards?](#)

[Know Your Basics](#)

[SmartThings and the Device Maker](#)

[Using Serial Bluetooth With a Microcontroller](#)

[VIEW ALL >](#)



TS-4900
Quad Core
i.MX6 ARM CPU
WiFi and Bluetooth
Now Supporting:



ubuntu core
LEARN MORE

FROM THE Q&A

Selected questions from past Q&A columns.

.....
[Attic Fan Controller](#)
.....

[Stepper Motor Overview](#)
.....

[Winding Single-Layer Air Coils](#)
.....

[Wide-Range Current Regulator](#)
.....

[Sawtooth Generator](#)

POPULAR STORIES

[Wirespondence!](#)

[RADAR And Electronic Warfare Fundamentals](#)

[Wire Wrap Is Alive And Well!](#)

[Turing Machines](#)

[What The L Is It?](#)

LEARNING ELECTRONICS

Need to brush up on your electronics principles? These multi-part series may be just what you need!

[Understanding Digital Logic ICs](#)

[Bipolar Transistor Cookbook](#)

[Op-Amp Cookbook](#)

[FET Principles And Circuits](#)

[Triac Principles And Circuits](#)

[Understanding Digital Buffer, Gate And Logic IC Circuits](#)

[Smiley's Workshop: AVR C Programming Workshop](#)

[Smiley's Workshop: Serial Communications Between An Arduino And A PC](#)

[Checking Inductors](#)

[Small Logic Gates – The building blocks of versatile digital circuits.](#)

[Security Electronics Systems And Circuits](#)

[Using Seven-Segment Displays](#)

[Signal Generators](#)



X MARKS THE SPOT
WHERE INNOVATION MEETS IMPLEMENTATION

AUVSI XPONENTIAL
ALL THINGS UNMANNED

APRIL 30 - MAY 3
DENVER

REGISTER NOW ➔

The banner features a blue and white color scheme. On the left, a large blue arrow points right, containing the text 'X MARKS THE SPOT' in large white letters, with 'WHERE INNOVATION MEETS IMPLEMENTATION' in smaller white letters below it. To the right of the arrow is a photograph of a man in a white shirt working on a drone. Below the arrow is the AUVSI Xponential logo, which consists of a stylized 'X' made of black and blue squares, with 'AUVSI' in blue and 'XPONENTIAL' in black, and 'ALL THINGS UNMANNED' in smaller black letters below. To the right of the logo is the text 'APRIL 30 - MAY 3 DENVER' in blue. At the bottom right is a black button with the text 'REGISTER NOW' in white and a white arrow pointing right.

ARCHIVES

[April 2017](#)

[March 2017](#)

[January 2017](#)

[October 2016](#)

[June 2016](#)

[View complete archives list](#)

RECENT POSTS

[April 13 - A Night at the Opera?](#)

[April 13 - 3D Printable Tractor Beam](#)

[March 07 - Video Games Turn 50](#)

[March 07 - Make Your Raspberries Touchable](#)

[January 27 - World's Smallest Transistor – Sort of](#)

RECENT COMMENTS

John Watkins All prototypes I make using inkjet transparencies on uv sensitized pcb. I use Ferric Chloride and Hydrochloric to etch them with excellent results. Keeping the Ferric Chloride acidic prevents the...

[Newsletter #95](#) · 4 days ago

ronadt123 Hi Craig, I am trying to load the software with Arduino IDE 1.8.5, when it gets to this line: `strcpy(buffer, dayShortStr(weekday()));`; I get the following error: 'weekday' was not declared in this...

[ESP8266 NTP Clock · 4 days ago](#)

What Cheer My fondest memories of Meccano (now owners of Erector) sets integrated with Mamod Steam engines were triggered by this excellent article. Thank you. Every young person should have the opportunity...

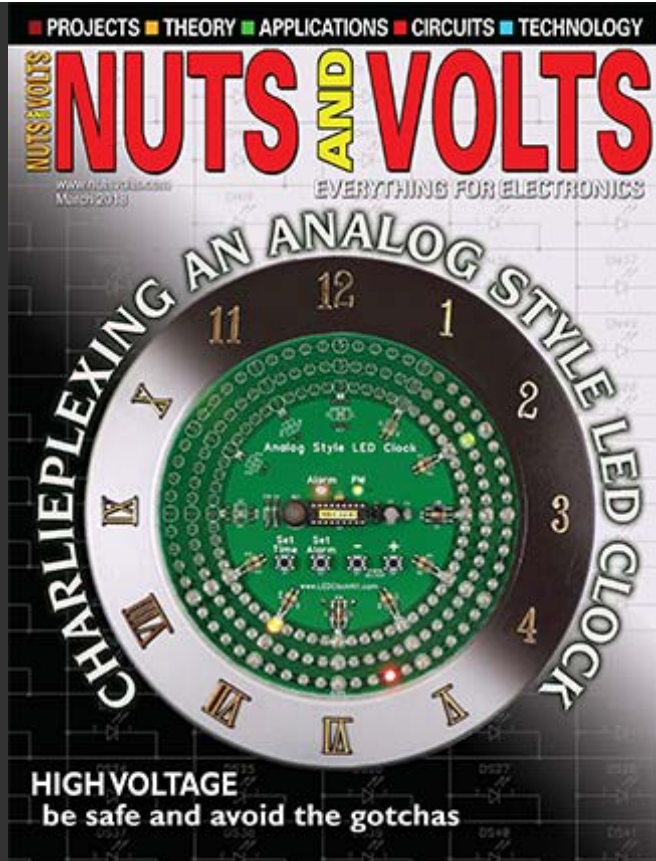
[The Magic of the Gilbert Erector Set · 5 days ago](#)

My Home Made Solar Panel A charge controller is the layer of protection for your solar system. Charge controllers are designed to protect the battery from overcharging and to prevent reverse current to panels during the...

[Build an Inexpensive 12 volt/ 12 amp Modern Digital Solar Charge Controller · 1 week ago](#)

Colin Peiris Greetings Thank you very much for the feed back, And I didn't get the answer I want. Fore instance : With all the above steps sequencing is done OK! But ! What I wanted is when first led is on let...

[LED Chaser/Sequencer Circuits · 1 week ago](#)



MARCH 2018 ISSUE

Working with High Voltages

Review: Zeppelin Design Labs — Altura MIDI Theremin

Build an Analog-Style LED Clock — Part 1



FEBRUARY 2018 ISSUE

Light Bulbs, LEDs, and Circuit Junctions

The Arduino Graphics Interface — Part 1

Build the IoT Sump Pump (or Pretty Much Anything IoT)

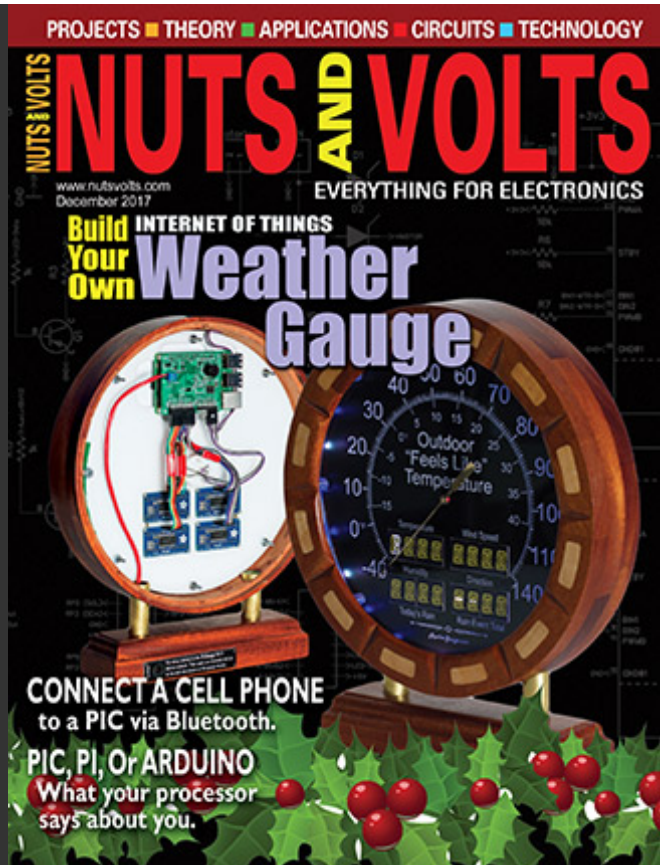


JANUARY 2018 ISSUE

Ham Radio in a Pinch

Speaker Protection and Muting with an Optical Coupler

Build a Custom Weather Gauge — Part 2



DECEMBER 2017 ISSUE

Replacing The 555 With A PIC — Part 3 — A Digital Analog

Climbing the Learning Curve

Build a Custom Weather Gauge — Part 1

CONNECT WITH US



SUBSCRIBE TO OUR NEWSLETTER

Sign Up Now

Copyright © 2018 T & L Publications. All Rights Reserved | [Privacy Policy](#) | [Terms & Conditions](#) | [Copyright Statement](#)
