
Kromrey Converter Plans

By D.M.Rogers

Full scale plans for the replication of John Bedini's prototype of a Ferromagnetic Electric Generator invented by Raymond Kromrey.

Release 1.0

Written by
Dave Michael Rogers

**Sponsored
by**

**Richard and Kate Lines
Courtiestown Marine Ltd.
www.courtiestown.co.uk**

and

The OTG-List internet group
<http://tech.groups.yahoo.com/group/OTG-LIST/>

Acknowledgements

Raymond Kromrey
John C Bedini
Clive Sinclair
Members of the OTG-List
Jason, Merv, Tom of The Anvil Forge

Copyright © 2010 DMR, Dave Michael Rogers, All rights reserved.

Disclaimer

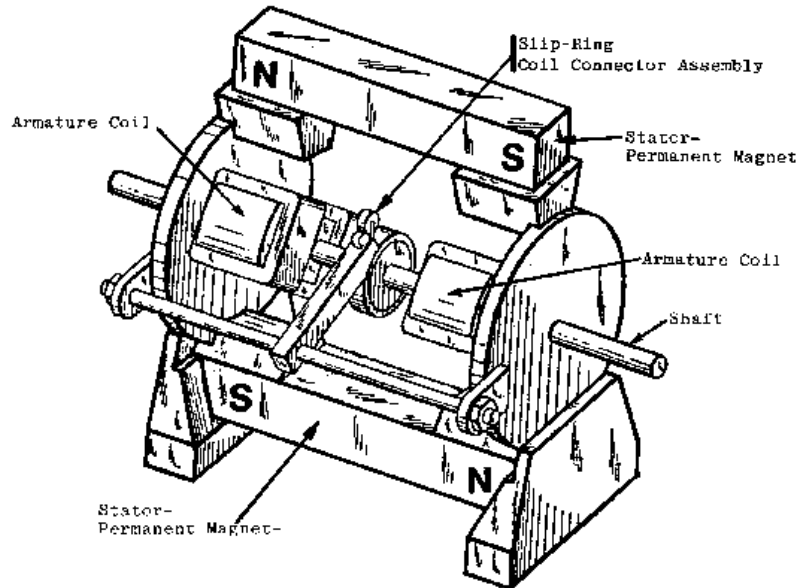
**No liability is accepted for any injury or ill effect caused
by the construction or operation of such a device.
Your safety is your responsibility.
NO CLAIMS ARE MADE AS TO THE PERFORMANCE OF THIS DEVICE.**

CONTENTS

1. Introduction
2. Basic list of required materials.
3. Exploded view of Kromrey Converter
4. Drw #1 - PLATE A
5. Drw #2 - PLATE B
6. Drw #3 - PLATE C
7. Drw #4 - PLATE D
8. Drw #5 Stator Shaft & Slip Ring Assembly
9. Drw #6 Aluminium Support Columns
10. Drw #7 Magnet Stack Adjustable Iron Pole
11. Drw #8 Armature design
12. Drw #9 The Magnet Stack and pole boots
13. Drw #10 Commutator Brush Assembly

Kromrey Converter

An electrical generator



Original drawing from Raymond Kromrey's US Patent.

These plans have been drawn up for a first time build of a device seen only in pictures from the internet and on DVD from the video production Energy from the Vacuum part 10, and discussions with Tom Childs and John Koorn, who have both seen John Bedini's Kromrey up close.

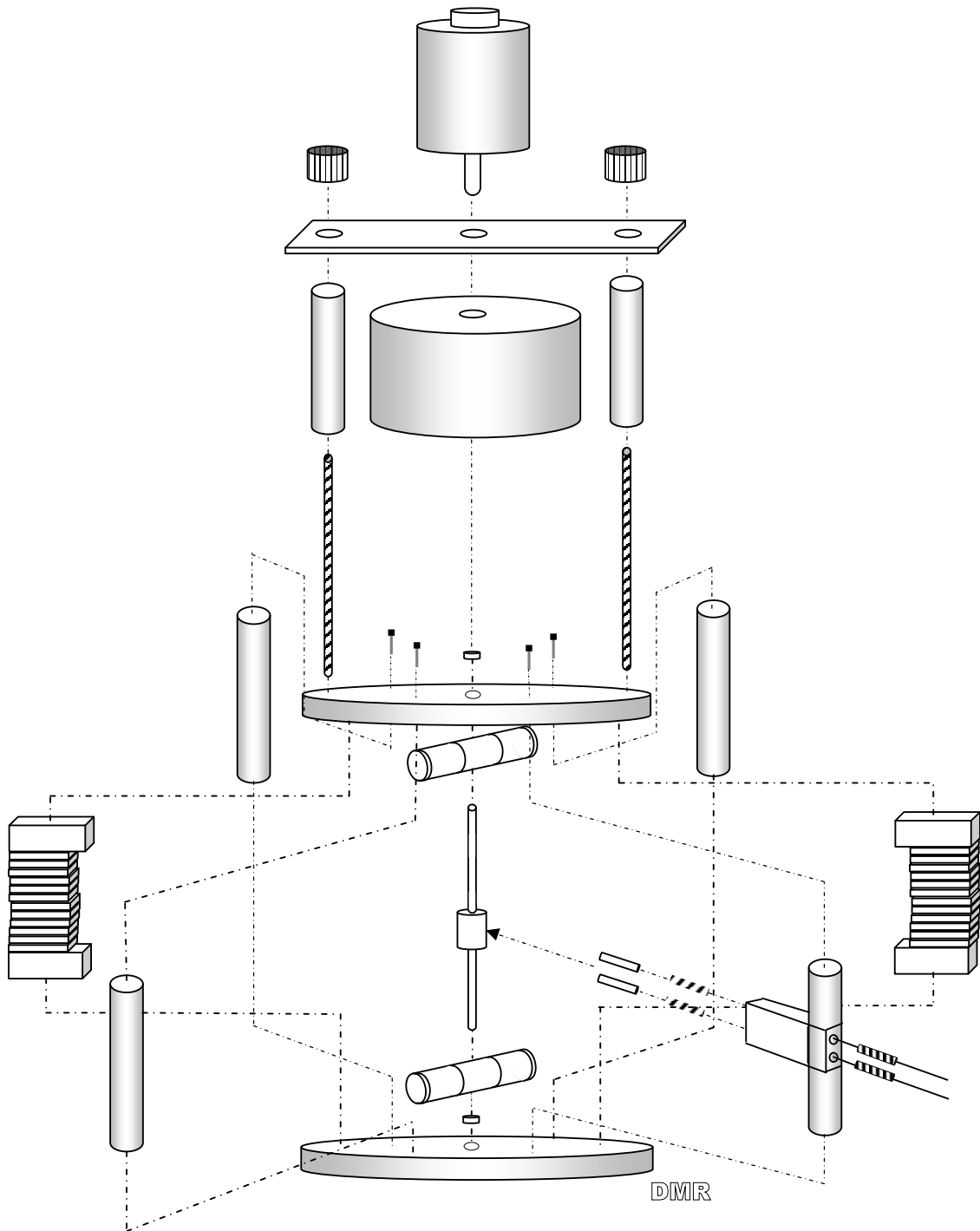
As such the dimensions have been based around the use of a standard size magnet known to be used by John Bedini, and all other measurements derived and calculated by graphical means from photos and screenshots. Some of the dimensions have been verified as accurate by disclosures made by John Bedini.

The materials specified in these plans **MUST** be adhered to.
NO SUBSTITUTIONS.

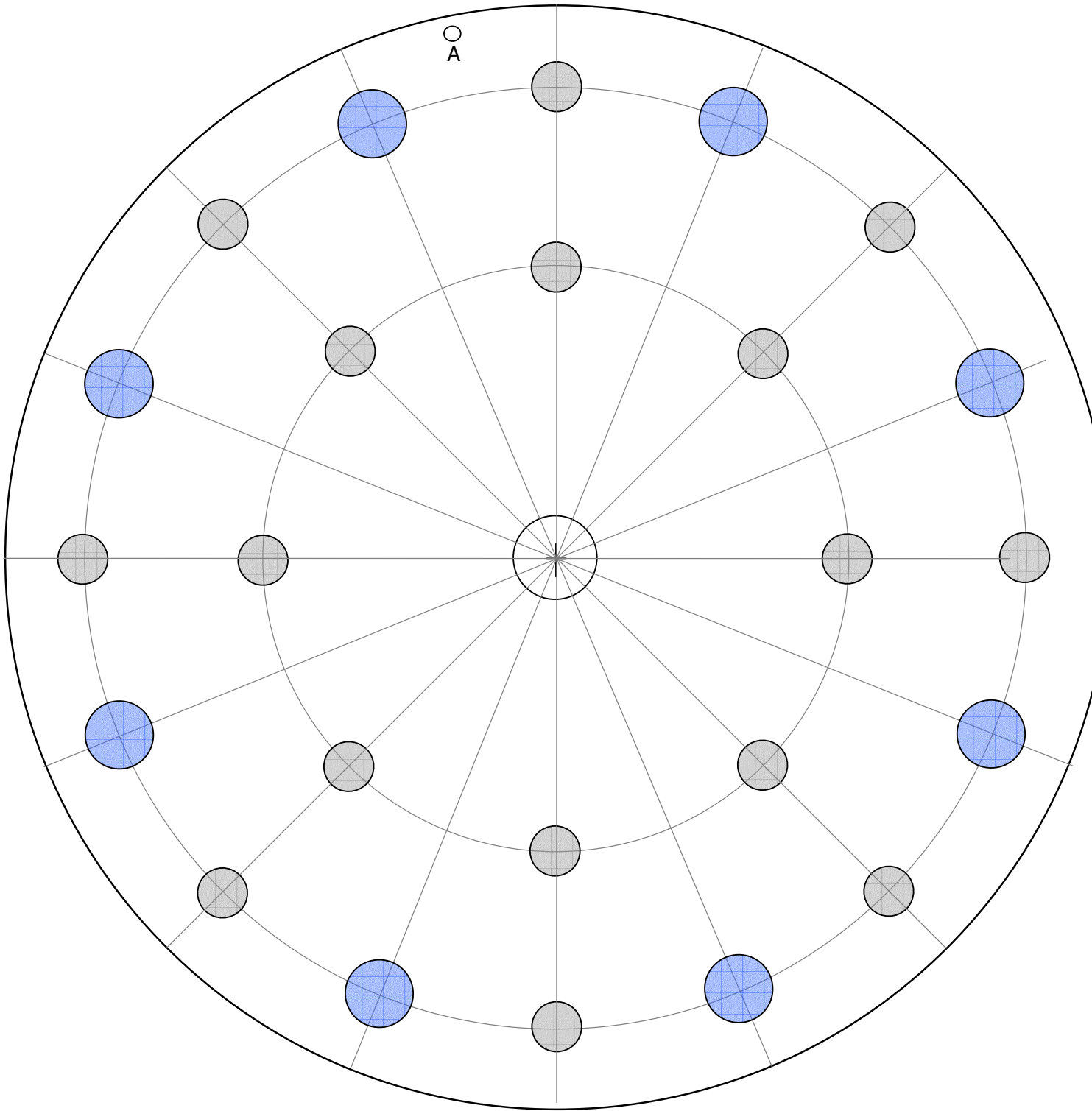
BASIC LIST OF REQUIRED MATERIALS

	Description	Quantity
1	Ceramic 3/8" x 15/8" x 7/8" Barium Ferrite Magnet Block, Magnetized through thickness.	40
2	6mm Aluminium Plate	4 x 215mm rounds
3	Aluminium Rod 25mm dia	4 x
4	8mm Stainless Steel 316 rod	Tba
5	Copper Tube 15mm	30mm
6	6mm round Carbon Copper Brushes	2
7		
8	95mm of 25mm round Iron bar	2
9		
10	M6 stainless steel Allen Bolts + Washers	8
11	Bearings 16mm OD	2
12	M6 stainless steel nuts	8
13	24volt Motor	1

Exploded View of Kromrey Converter

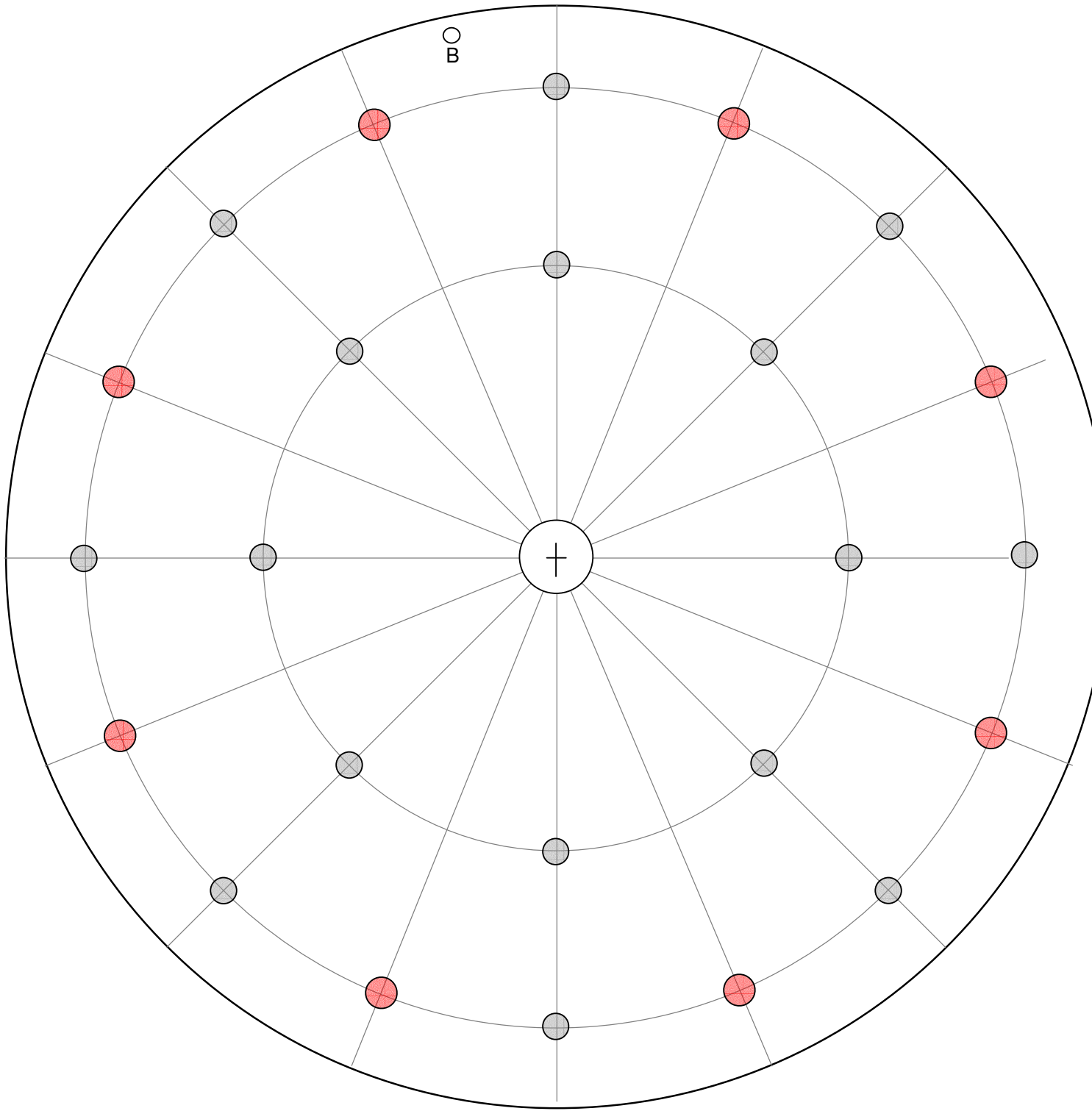


NOT TO SCALE
Drawn by Dave Michael Rogers



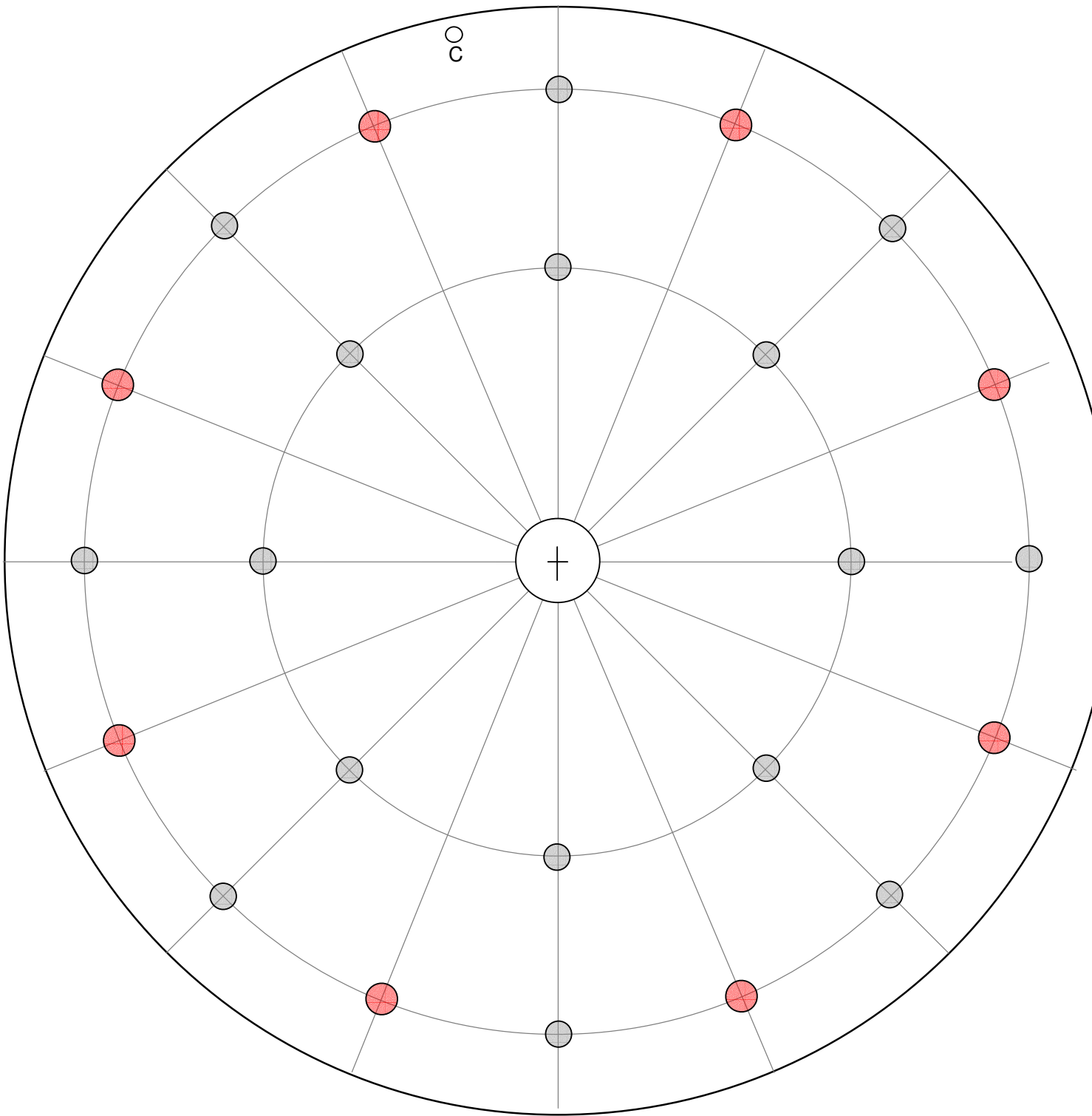
Drw #1 - PLATE A.

- 6mm Aluminium plate
- 211mm Diameter
- Centre hole to be cut to bearing size OD, 16mm.
- All shaded holes are 9.5mm and countersunk.
- All blue tinted holes are 13mm.



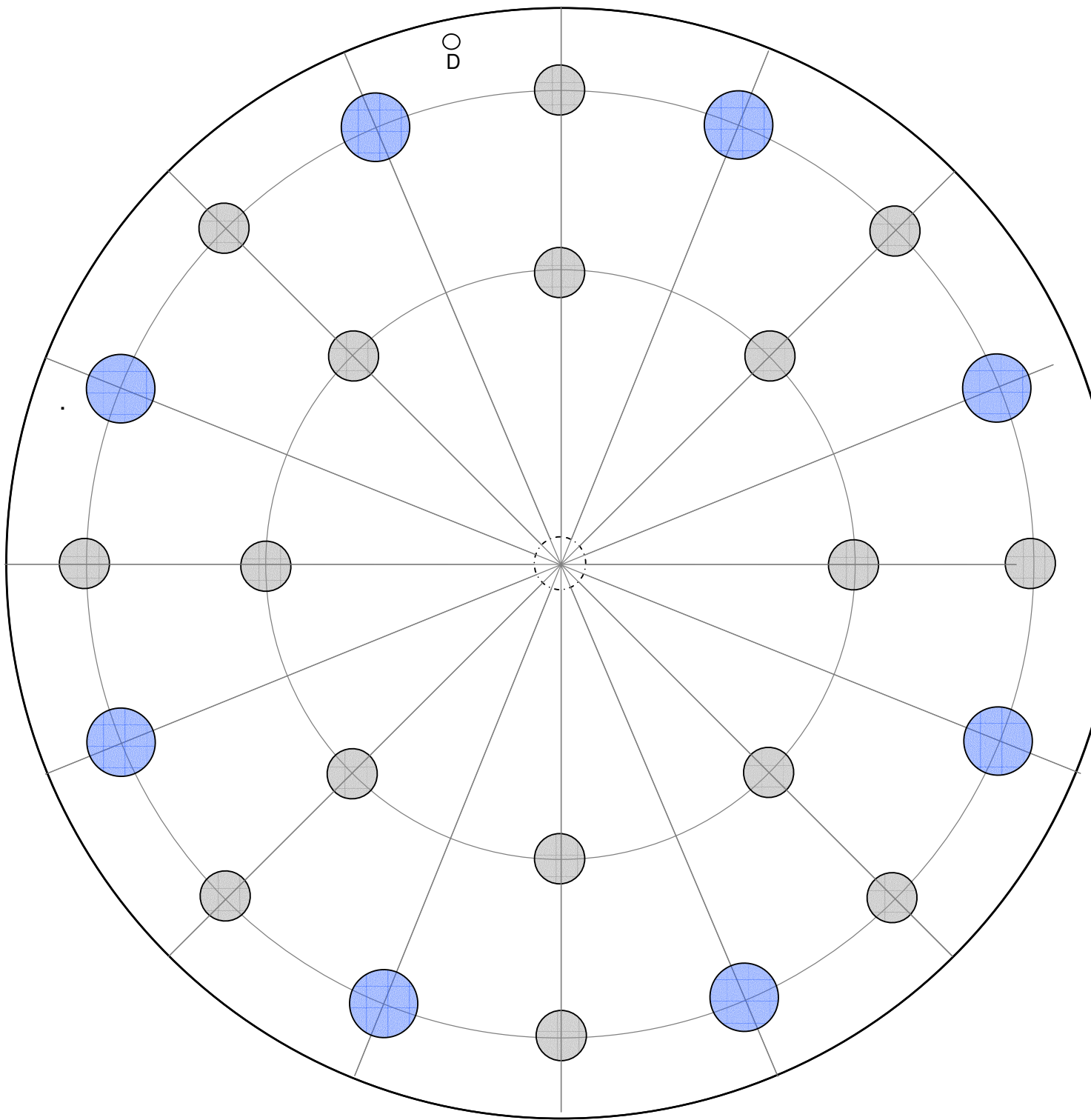
Drw #2 - PLATE B.

- 6mm Aluminium plate.
- 211mm Diameter.
- Centre hole to be cut to 15mm.
- All shaded holes are 5.5mm and threaded to take M6 SS grubs.
- All tinted holes are 6mm.



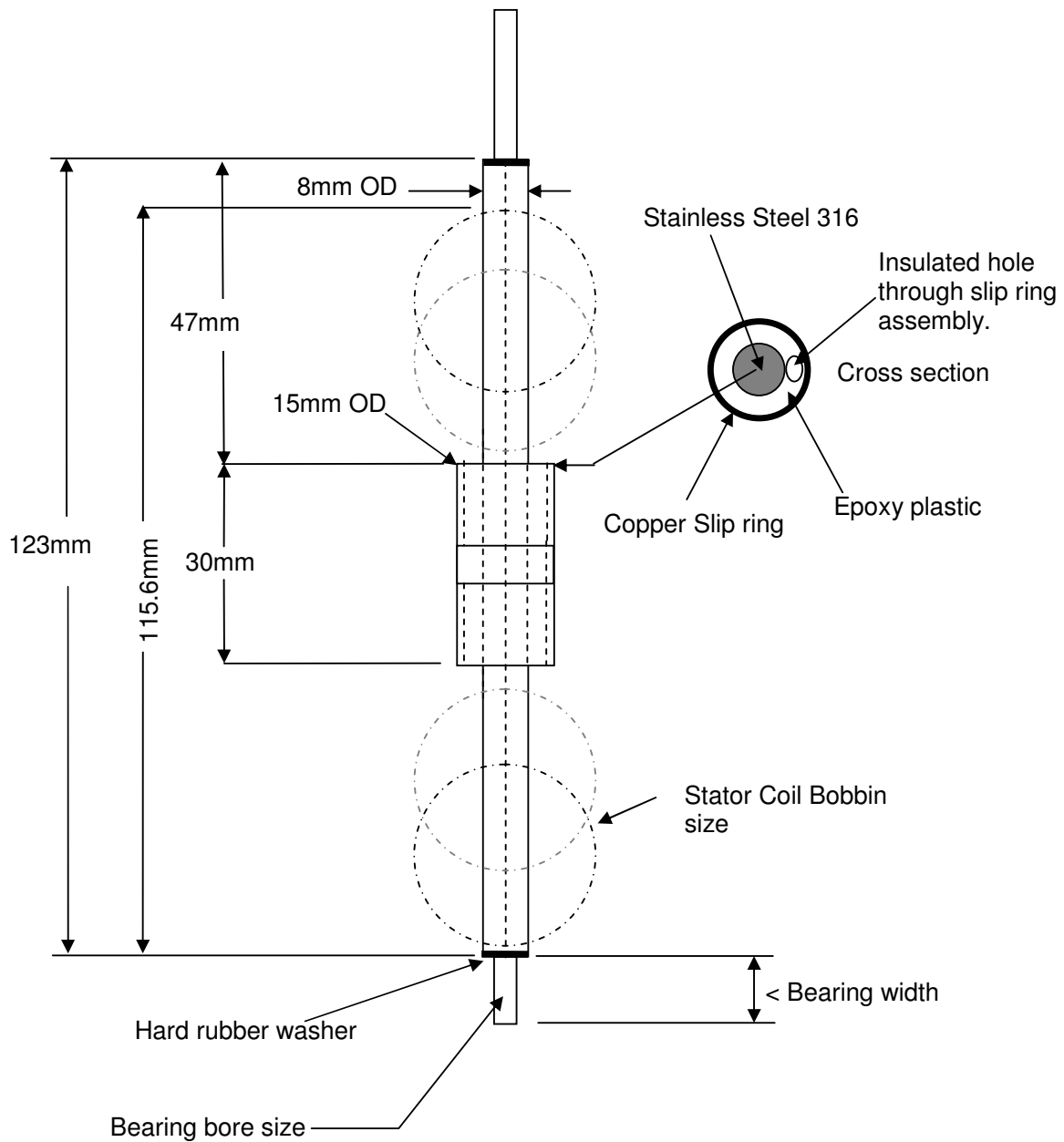
Drw #3 - PLATE C.

- 6mm Aluminium plate
- 211mm Diameter
- Centre hole to be cut to bearing size, 16mm.
- All shaded holes are 5.5mm and threaded for M6 grubs.
- All tinted holes are 6mm.



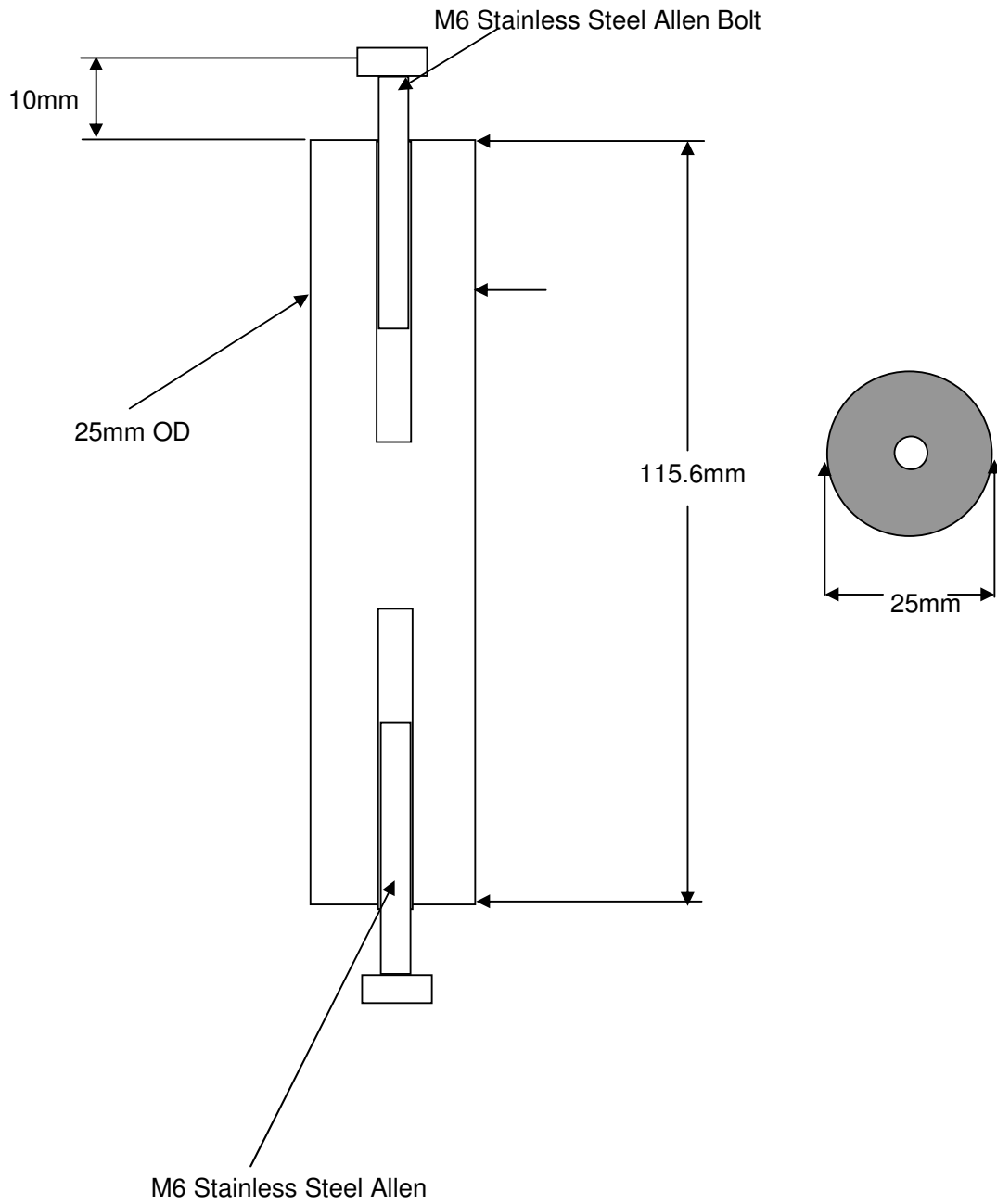
Drw #4 - PLATE D.

- 6mm Aluminium plate
- 211mm Diameter
- Centre hole plugged.
- All shaded holes are 9.5mm and countersunk
- All blue tinted holes are 13mm and countersunk.



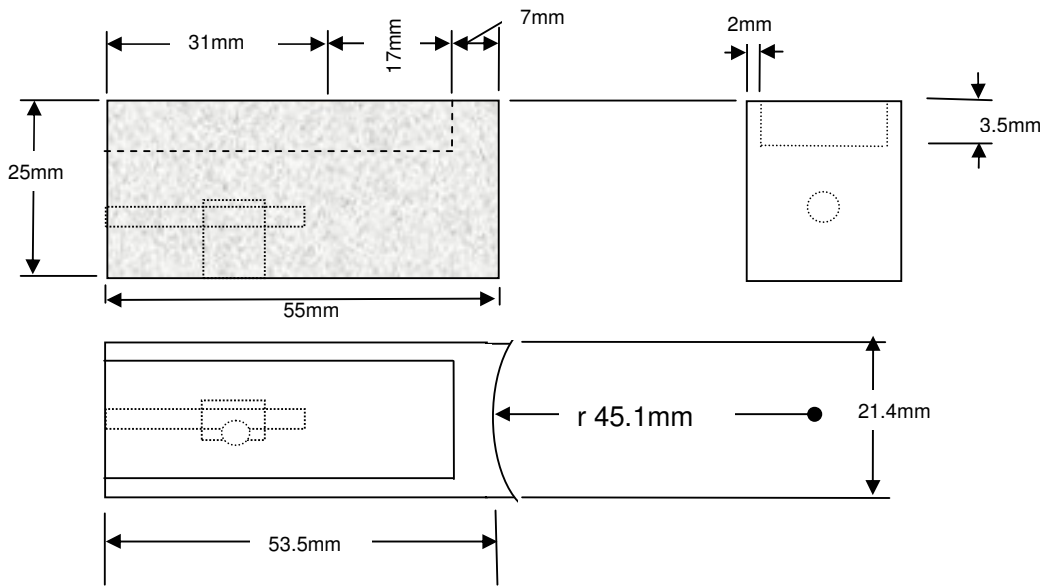
Drw #5 Stator Shaft & Slip Ring Assembly.

The stainless steel used for the shaft MUST be NON-MAGNETIC. This is most important.

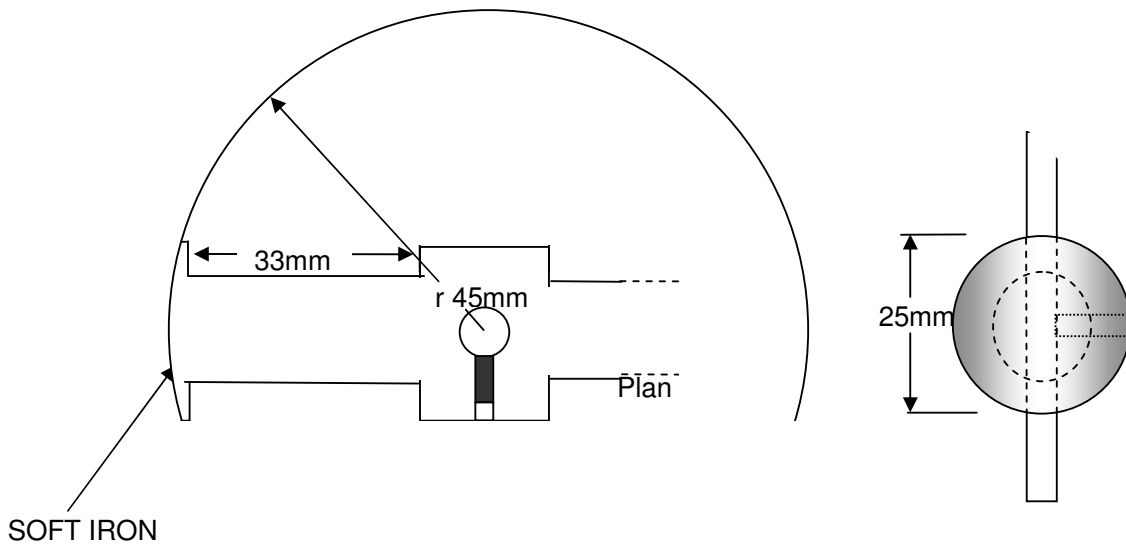


Drw #6 Aluminium Support Columns.

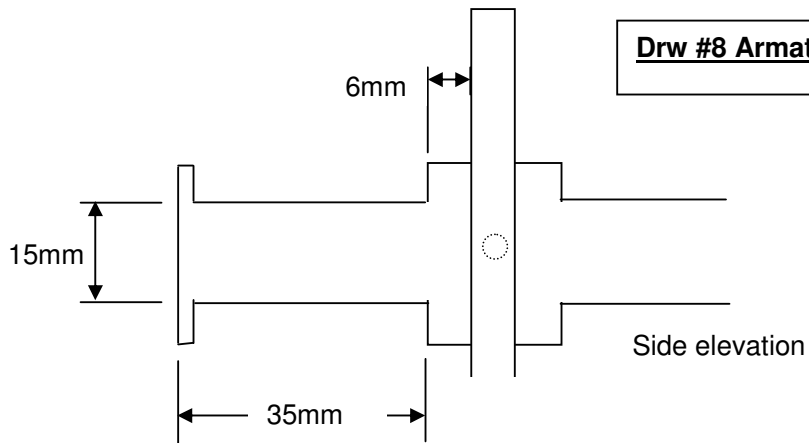
Minimum of 4 support columns are required, but provisions for 8 support columns are apparent on the original Kromrey replication by John Bedini.

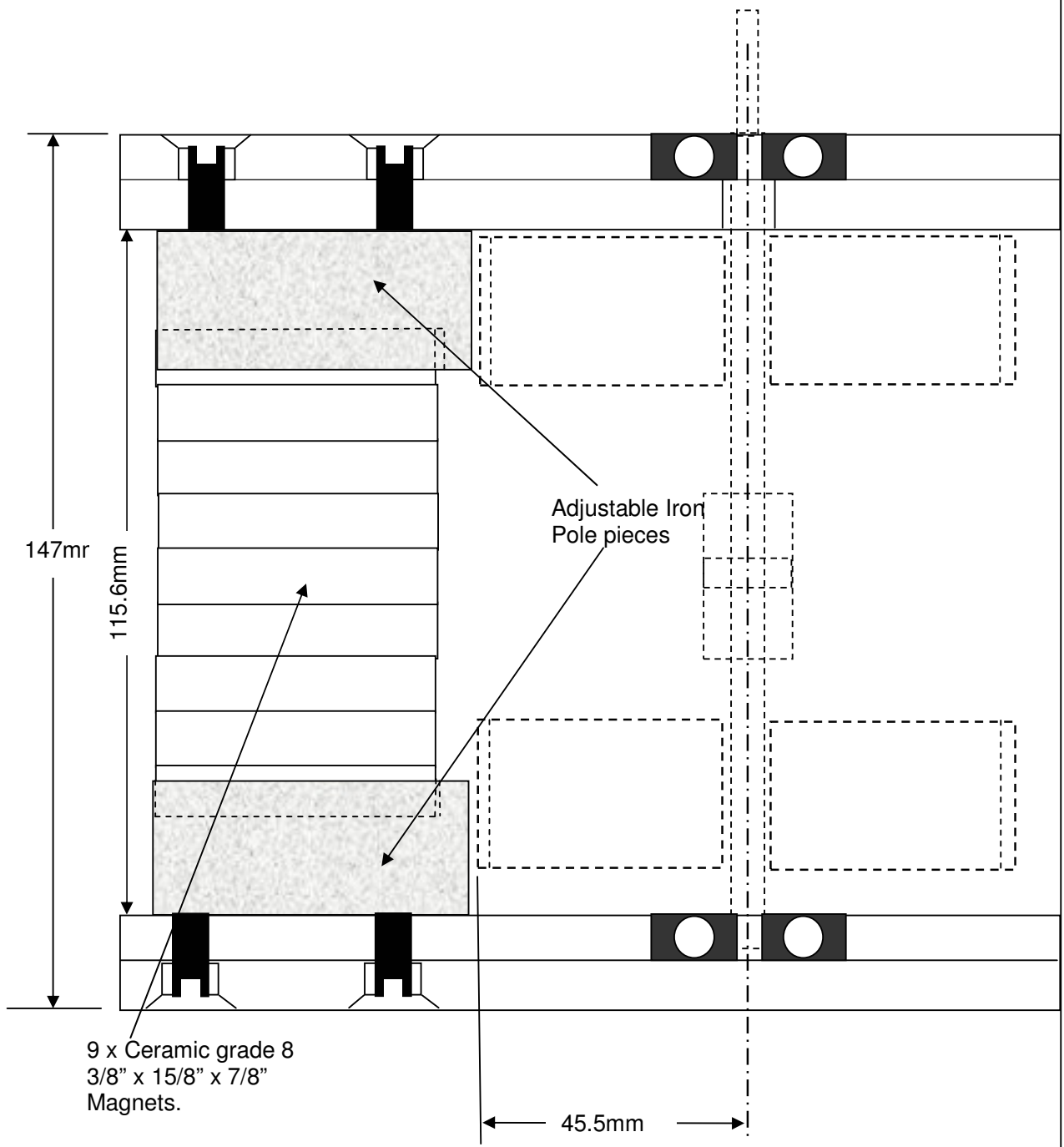


Drw #7 Magnet Stack Adjustable Iron Pole

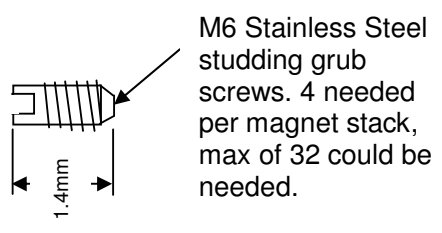


Drw #8 Armature design



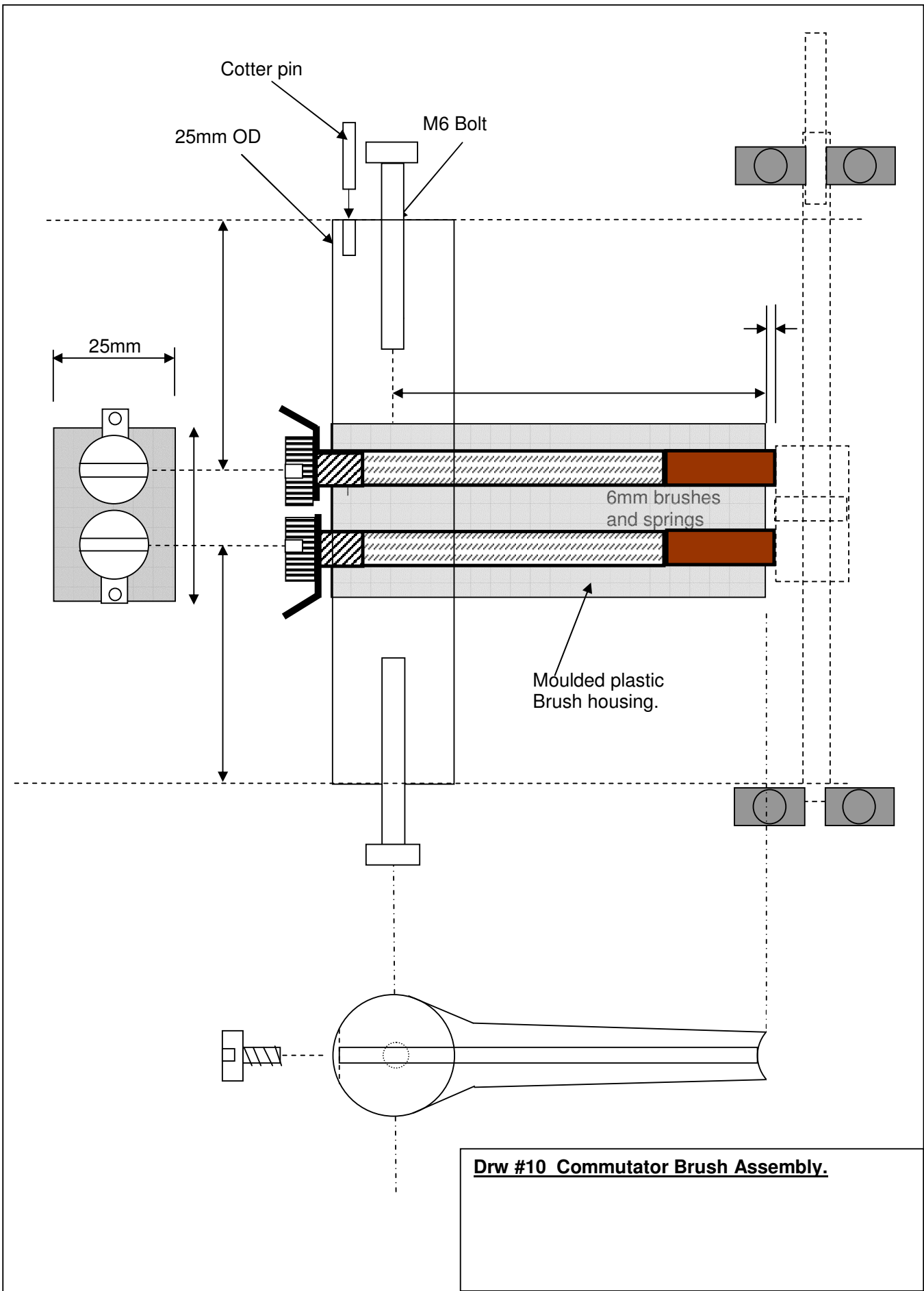


9 x Ceramic grade 8
 3/8" x 15/8" x 7/8"
 Magnets.



Drw #9 The Magnet Stack and pole boots.

Kromrey Side Elevation



Part 1
END

Please visit your Kromrey support group for a photographic record and technical support.