

SUBSTANTIAL CUT IN PIERCE-ARROW PRICE ANNOUNCED

A substantial reduction in the prices of its touring car models effective after September 1, and a reduction on the prices of its truck models, effective immediately, has been announced by George W. Mixer, president of the Pierce-Arrow Motor Car company.

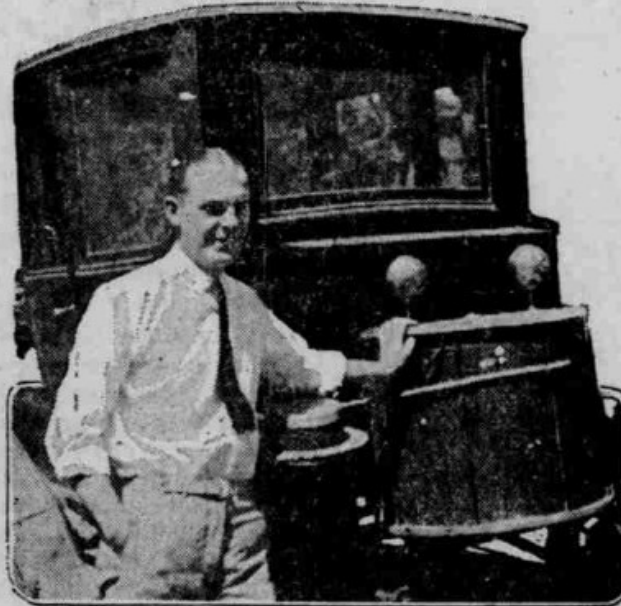
The new price of the standard seven-passenger touring car is \$6,500 at the factory, the enclosed car prices being graded proportionately.

The new prices of its truck models are: \$4,850 for the five-ton size; \$4,350 for the 3½-ton and \$3,200 for the 2-ton.



This Tire

ELECTRICITY "TAKEN FROM AIR" DRIVES AUTOMOBILE



C. E. AMMANN AND HIS "ATMOSPHERIC GENERATOR" ATTACHED TO AN ELECTRIC AUTOMOBILE

DENVER, Colo., Aug. 26.—Demonstrations are being made on the streets of Denver of a new electric generator that is claimed by the inventors to take electricity from the air.

The inventors are J. E. Ammann of Denver, and his brother, C. E. Ammann of Spokane, Wash.

To demonstrate, the brothers borrowed an old electric auto, took out the batteries, and after roping their new "atmospheric generator" fast, they got in and rode off at high speed.

"There is nothing inside the drum that moves; the contents consists only of iron, wire and minerals," says C. E. Ammann.

"It can be used to drive any electrical apparatus and can be made in any size."

The brothers are closely guarding their secret, and even take their "brain-child" when it is not in use, to their room in the Argonaut hotel.

So far the brothers have not offered to sell their proposition.

Electrical men in Denver are waiting "to be shown," but they grant the thing works.

"New C

Buys a brand new s
\$1,625.00 f. o. b. P
automobile. The fa
them to some other
cost of re-shipment
make special terms
cars. There are onl

NEW 1

The same m
rather than resh
excellent satisfact
saving on a high-
pay you to buy an

\$2,500.00 truck cha
\$2,700.00 truck cha
curtains
\$3,000.00 truck cha
open express bod

All of the al
This offer w
few days only. If
given to ship them

"TWO REAL

Dodge Coupe
car for private use
1921 Nash 7
extra equipment.
covers and will m
Special terms on e

Then we ha
Dodge Comr
Ford Coupe
Hudson Sup
1921 Essex

AUTO INSURANCE

balance bodies was the highlight of

According to the incomplete information included in this short synopsis...

<http://vinyasi.info/energy/synopsis.pdf>

...energy, particularly electrical energy, is atomic as we know it since matter can convert into it. But I have my own model for the atom. It is...

... (1) **time**, (2) the **electro-motive force (EMF)** and (3) the **magneto-motive force (MMF)** as suggested to us by Eric Dollard. Knowing this, electricity can be synthesized and it can be decomposed. So, although we're told that energy IN equals energy OUT, it may not always be true if we recycle the subatomic elements of electricity within our live circuit without using atom smashers or nuclear devices. Then, energy OUT will equal the energy IN plus the amount of time we recycled the subatomic elements of

electricity which were already residing in a live circuit no matter how teensy those two forces are to begin with. It doesn't matter. For they can be recycled indefinitely to create any amount of electricity to reside in a circuit after enough time has passed to allow this buildup to occur.

Combine time with only one or the other force, and we get proto-atomic, or prehydrogen, elements Mendeleev wrote of in his unpublished data concerning his periodic chart ...

<https://archive.org/details/cu31924012371096/page/n33>

As the first reviewer on the following webpage points out...

<http://tinyurl.com/chemaether2>

... Mendeleev was afraid his ideas of lighter than hydrogen elements would not readily gain acceptance and might hamper acceptance of his whole data, so he left those elements out. That's why we don't generally know about them. We're also told that his idea has been refuted. By what? These lighter than hydrogen elements can't be measured. They can only be inferred from electrodynamic theory as coexisting to create power (measured as watts) since power is the combination of current and voltage in such a way that these two measurable values can't be separated from a live circuit's power.

So, EMF contributes towards a circuit's voltage, but is not the only contributing factor since a live circuit also contains current.

And MMF contributes towards a circuit's current, but is not the only contributing factor since a live circuit also contains voltage.

This is the atomic nature to electricity in which both EMF and MMF are simultaneously inside a live circuit and are generally considered to be inseparable.

Put another way, combine time with both EMF and MMF, and we get all of the other elements of the periodic chart beginning with hydrogen.

EMF and MMF are significant since they cannot be spent. They can only be reused. Every live circuit contains these embedded in the circuit's current and voltage (known as the electric and magnetic fields), but in a combined state. These two forces can be manipulated to recycle themselves in a circuit to make it look as if energy is appearing out of nowhere (which it isn't) or disappear into nowhere (which it can't; it is absorbed back into the environment or into the circuit or both). But, we can't measure this - we may only infer it - since we need all three subatomic elements to measure an element's

embodiment of electricity as an embodiment of standard theory of current flow, etc, which is atomic in our description of it and our analysis (measurement) of it.

This non-measurability to these two proto-atomic forces is probably why early scientists were tempted to call their existence: the ether, or aether, which - being non-measurable - requires faith in our theory to believe that something we can't measure in time could possibly exist. For time, as we know it, includes the effect with the cause. It does not exclude one from the other.

But both forces are complete in themselves since each is the mirrored opposite of the other. This results in the ability for electricity to travel forwards in time (known as exhibiting positive resistance) or backwards in time (known as exhibiting negative resistance). And when current and voltage are out of phase by 180 degrees, then I know that electricity is traveling backwards in time towards negentropy (footnote # 1). When they're in phase with zero degrees of separation, then I know that electricity is flowing forwards in time towards entropy.

footnote # 1

<https://en.wiktionary.org/wiki/negentropy#Noun>

So, if all we had was time combined exclusively with one or the other of these two forces - but not both at the same time, than all of the other atomic elements plus the opposing force not initially included, could be created if we allow for reactions to occur (and we know that Creation does allow for a reaction to action or else Sir Isaac Newton would not have stated so along with the Holy Bible and Eastern Scriptures {karma}).

Our electrodynamic theory allows for the existence of these two forces apart from each other, but combined with time, to account for the appearance or disappearance of electricity or else our simulators would not keep hinting at this reality (if we paid attention). In order to sweep these observations under the rug, we call these anomalies "numerical oscillations" or something similar to suggest that the simulator is dancing around us instead of being seriously accurate.

Two sub-atomic elements (time and one or the other force) are not adequate to create electricity as we generally know it. Yet, time can exist with only one or the other force since each force is the denial of the other.

In other words, EMF is the cause. It's reaction is MMF in time. And...
MMF can also cause a reaction in time which is EMF.

Again... Both forces are complete in themselves since each is the mirrored opposite of the other. Time is the only additional factor required to bring each of these two forces

into existence to serve as the building blocks of all matter and energy.

So, time is NOT a fourth dimension to spatial existence. It is one of the three subatomic elements of all matter beginning with hydrogen. Time is also the required building block to the proto-atomic elements of EMF and MMF which are not elements, but rather forces.

So, action without reaction is what these two forces, in their pure form, are all about. And, action with reaction in time is what the elements of the periodic chart - beginning with hydrogen and proceeding upwards - is all about - along with electrical behavior as we generally know it.

These forces can be manipulated by inducing a state in a circuit in which current and voltage are 180 degrees out of phase. This is known as a "negative impedance converter" - footnote # 2. Across a transformer, this segregates voltage dominating current on one side and current dominating voltage on the other side with current traveling in a negative direction from the side of the transformer with lower voltage towards the side with higher voltage - against our seasoned judgment! This backward motion is called negative resistance - footnote # 3 (a fluorescent lamp or neon bulb are good examples exhibiting this behavior).

footnote # 2

https://en.wikipedia.org/wiki/Negative_impedance_converter

footnote #3

https://en.wikipedia.org/wiki/Negative_resistance

The only problem with overunity is that a load can wipe it out with the greatest of ease. In a simulated circuit, a torque load made upon a simulated motor can be represented by a current source placed into the circuit. This flattens out the overunity in my current endeavor. But here's the catch....

Tesla discovered a clue to how to get around this. I can't divulge this clue, even though I didn't discover this, it's public knowledge (just not generally known), due to my present endeavors to patent my design. But I have simulated this trick of Tesla and only now (2019), after a year, do I understand how to describe how to build its implementation translated from its simulation.

I use a flavor of Berkeley SPICE known as Micro Cap which is considered one of the standards in the industry. It's used by Manitoba University electrical engineering students.

<http://spectrum-soft.com/>

Tesla used his brain for a simulator. That's why he could do so much with so little. Only after thoroughly simulating his devices would he attempt to build one and it always worked successfully the first time, everytime, he built it with no need to monkey with it on the bench. That's been my attitude.

It's true...simulators do vary in their ability to replicate reality. That's why I started out my training on a simulator which made it easy to learn how to fashion overunity circuits - too easy, in fact, to continue beyond a certain point of boredom. So, I moved on to LTSpice and finally settled on Micro Cap. I'm happy I made the move since I can't get away with very much.

But I'd caution anyone from considering that maybe I'm taking advantage of Micro Cap's short comings since it costs over two grand and would make its creators look a little ridiculous if its builtin safeguards failed to stop electrodynamic fraud from occurring.

Trust me. It's not that easy fooling myself using Micro Cap if indeed that is what I'm doing. Only after getting my training on Paul Falstad's easier simulator could I move onto Micro Cap.

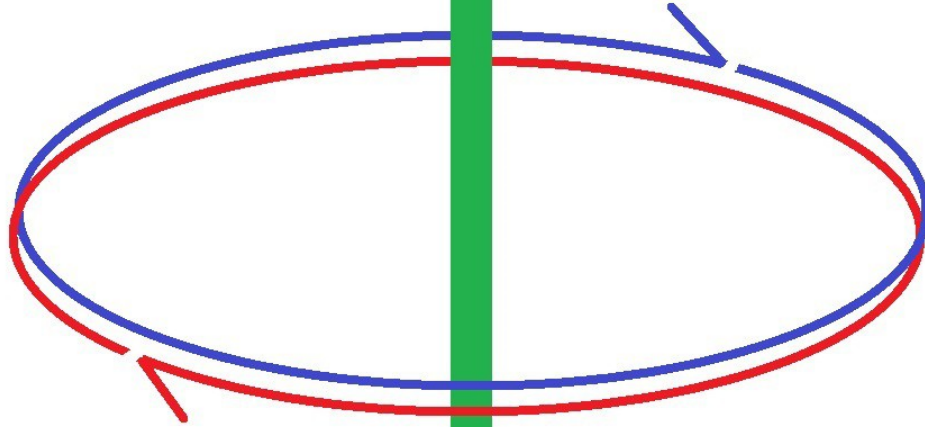
<http://falstad.com/circuit/>

I hope I didn't lose you with too much technicality since this is the only way to give an overview to what is missing in our theory.

Without this knowledge, how could anyone new to this subject understand free energy and overunity – without refutation.

EMF / FMM

**FORWARD TIME =
ENTROPY, CURRENT
& VOLTAGE IN PHASE**



**REVERSE TIME =
NEGENTROPY, I & V
OUT OF PHASE BY 180°,
REACTANCE**

EMF / FMM