



NONLINEAR DYNAMICS SUPERSEDES...  
Emulating Gabriel Kron's Nega...

0:00

14:16



Listen now

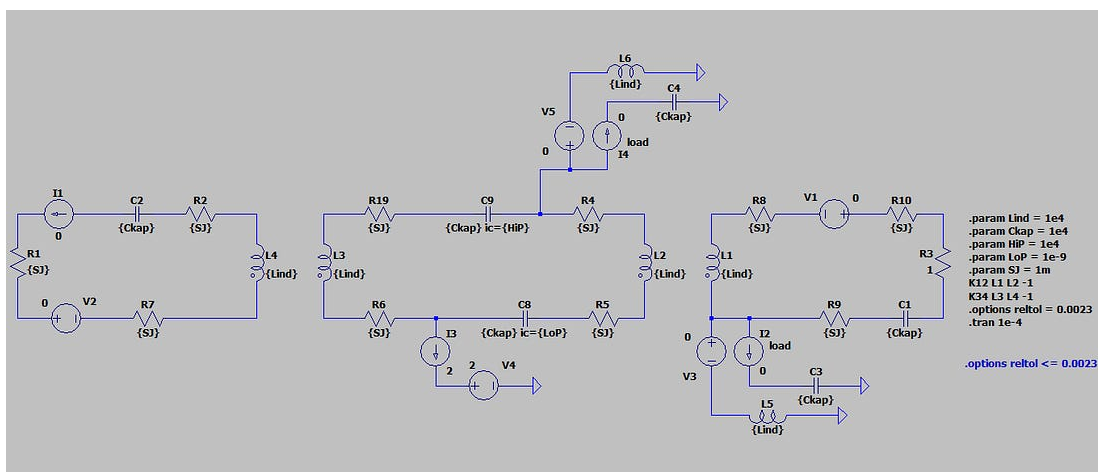
# Emulating Gabriel Kron's Negative Resistor with Bill Fogal's Transistor?

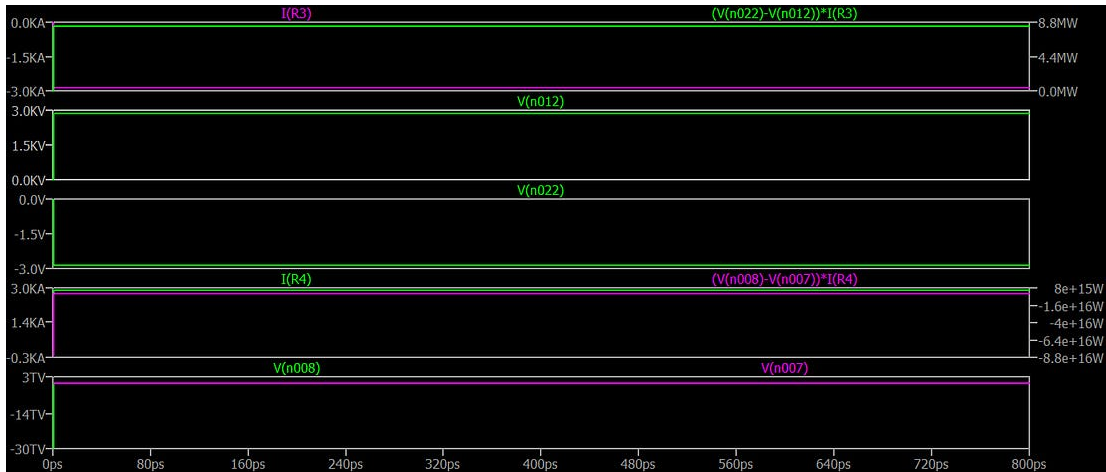
If you don't like my simulation, in LTSpice, of Eric Dollard's LMD analog computer, you can always try Bill Fogal's transistor at the end of this post.



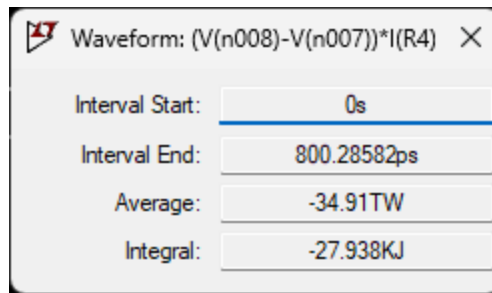
VINYASI

MAY 02, 2026

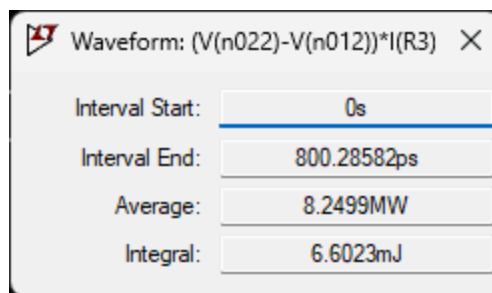




The watts of resistor, R4, on the upper-right side of the central module:



The watts of resistor, R3, on the far right of the schematic, above:



Netlist > > >

\* D:\Documents\Sims\LTSpice\2026\05 - May\01\LMD+CS-v1.asc

\* Generated by LTSpice 24.1.9 for Windows.

V1 N013 N012 0

C1 N024 N023 {Ckap}

R3 N024 N014 1

L3 N008 N018 {Lind} Rser={Lind}

L2 N010 N021 {Lind} Rser={Lind}

C8 N020 N019 {Ckap} ic={LoP}

C9 N003 N009 {Ckap} ic={HiP}

R4 N010 N003 {SJ}

R5 N021 N020 {SJ}

R6 N019 N018 {SJ}

R19 N009 N008 {SJ}

L1 N011 N022 {Lind} Rser={Lind}

V2 N015 N016 0

C2 N005 N006 {Ckap}

R1 N015 N004 {SJ}

L4 N007 N017 {Lind} Rser={Lind}

I1 N005 N004 0

R2 N007 N006 {SJ}

R7 N017 N016 {SJ}

R8 N012 N011 {SJ}

R9 N023 N022 {SJ}

R10 N014 N013 {SJ}

I2 N022 N026 0 load

V3 N022 N027 0

I3 N019 N025 0

V4 N025 0 0

C3 0 N026 {Ckap}

L5 0 N027 {Lind} Rser={Lind}

I4 N003 N002 0 load

V5 N003 N001 0

C4 0 N002 {Ckap}

L6 0 N001 {Lind} Rser={Lind}

.param Lind = 1e4

.param Ckap = 1e4

.param HiP = 1e4

.param LoP = 1e-9

.param SJ = 1m

K12 L1 L2 -1

K34 L3 L4 -1

.options reltol = 0.0023

.tran 1e-4

\* .options reltol <= 0.0023

.backanno

.end

Log > > >

LTspice 24.1.9 for Windows

Circuit: D:\Documents\Sims\LTSpice\2026\05 - May\01\LMD+CS-v1.net

Start Time: Fri May 1 14:39:33 2026

Options: reltol = 0.0023

solver = Normal

Maximum thread count: 4

tnom = 27

temp = 27

method = trap

reltol = 0.0023

WARNING: Node n005 is floating.

WARNING: Node n017 is floating.

Direct Newton iteration for .op point succeeded.

Simulation stopped by user.

Total elapsed time: 3.287 seconds.

Files loaded:

D:\Documents\Sims\LTSpice\2026\05 - May\01\LMD+CS-v1.net

---

[Download the simulator's files.](#)

---



**Charged Barrier Technology**

1.2MB  PDF file

Download

[Charged Barrier Technology was downloaded from here.](#)



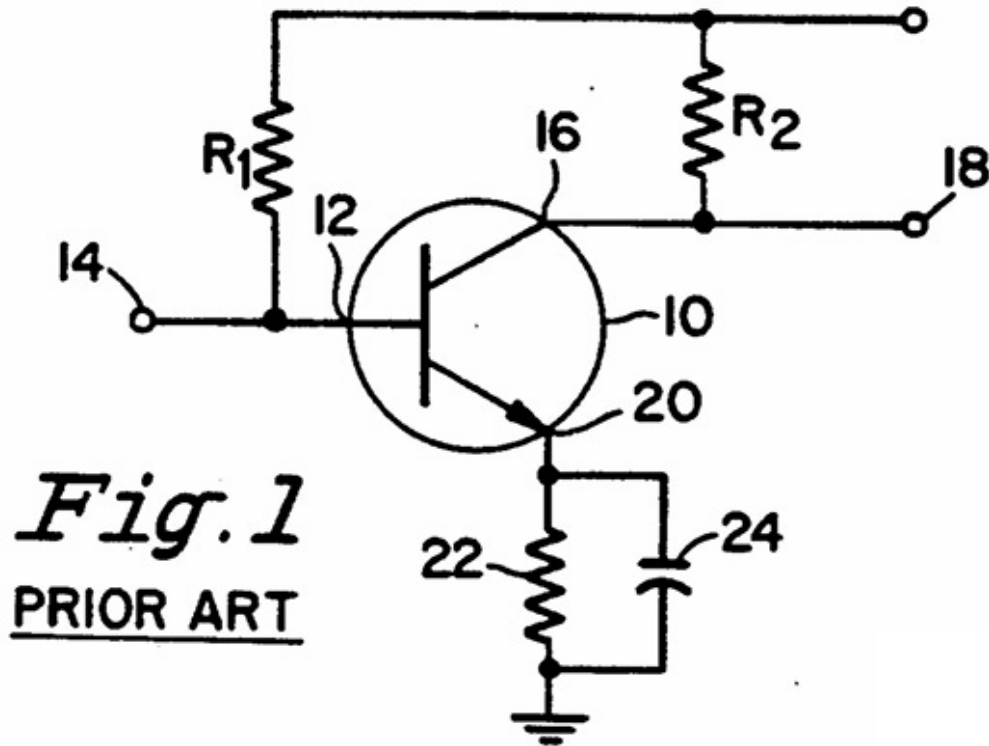
**Us5196809a**

697KB  PDF file

Download

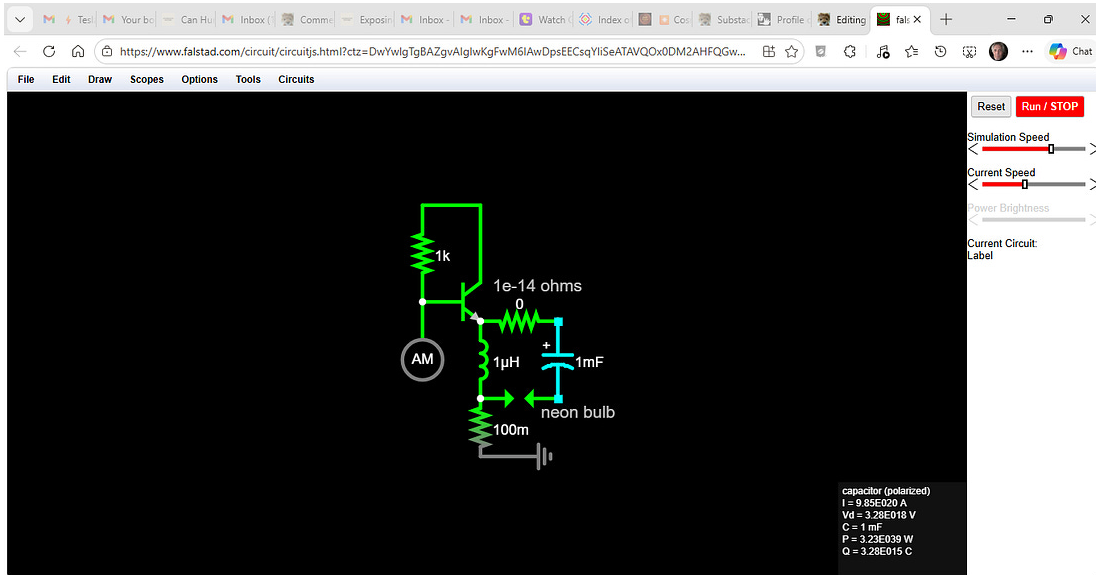
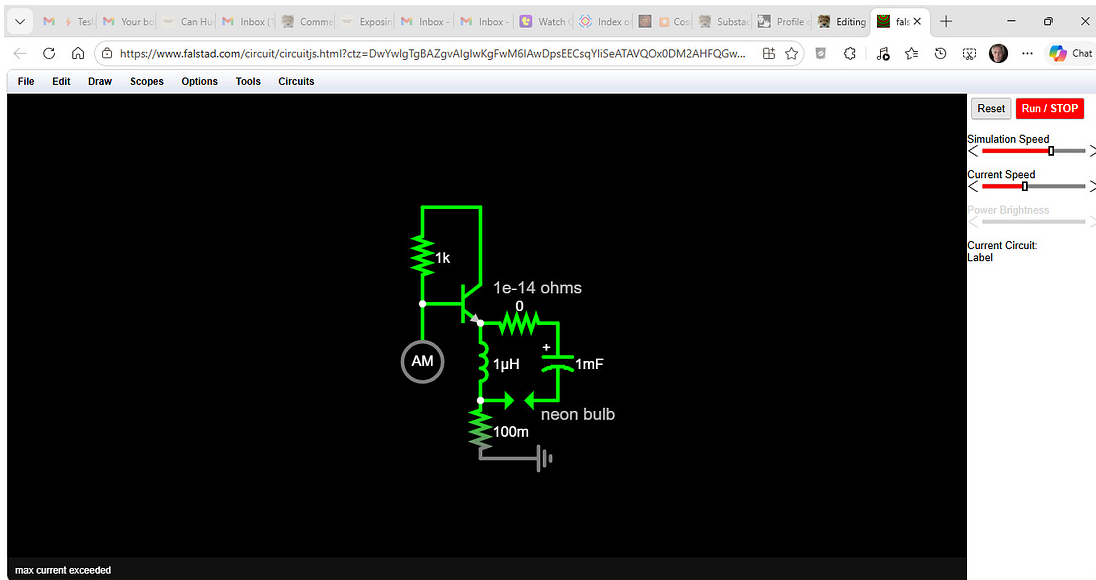
[Charged Barrier patent, by Bill Fogal, was downloaded from here.](#)

It wasn't hard to figure out the secret to Bill Fogal's transistor from the first diagram, Fig. 1, within his patent, above:

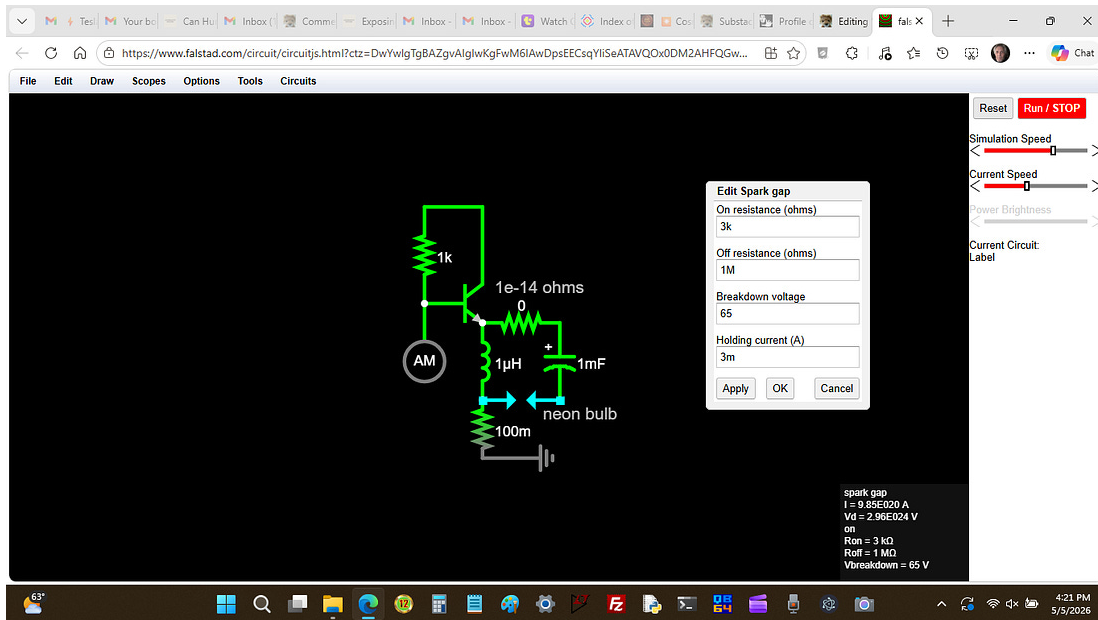


Discard his switch at #18 because it serves no purpose that I can see. Replace the resistor, #22, with an inductor. Add an aerial input of voltage at #14 so as to not incur any cost, like so:

**<https://is.gd/FyJnAu>**



And add a neon bulb to accentuate a contribution towards overunity:

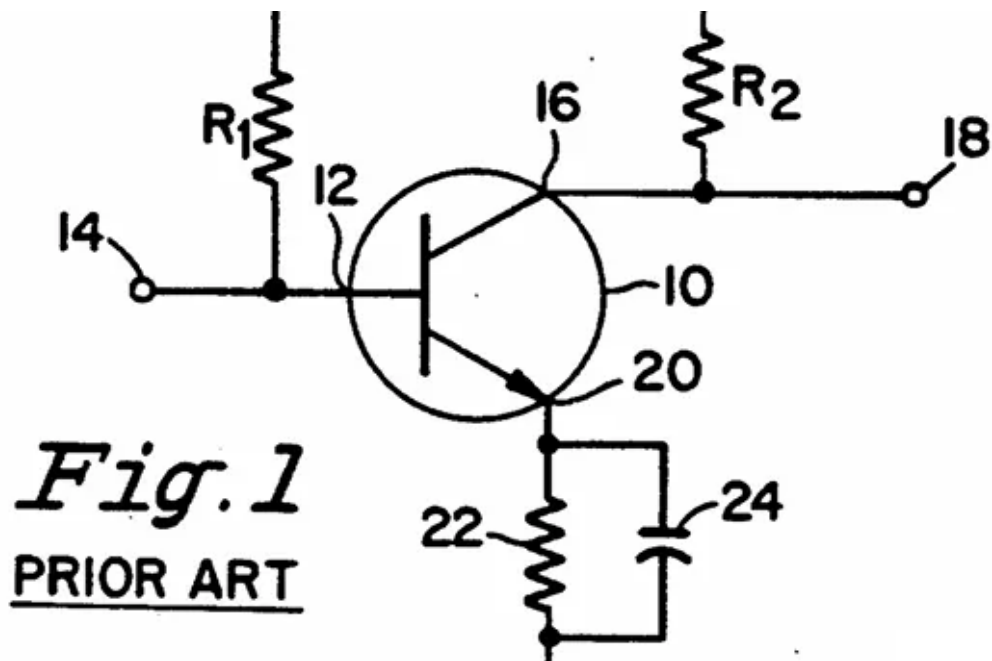


Your limit will be the tolerance of the electrolytic capacitor. In the example, above, it defaults to one volt.

The next post in this series:

## Bill Fogel may have figured out Gabriel Kron's Negative Resistor which may have originated with Nikola Tesla? - pt. 1

VINYASI · MAY 3



Gabriel Kron boasted that ...

[Read full story](#)