

Analyzing Bill Fogal's Charged Barrier Transistor

(again)



VINYASI

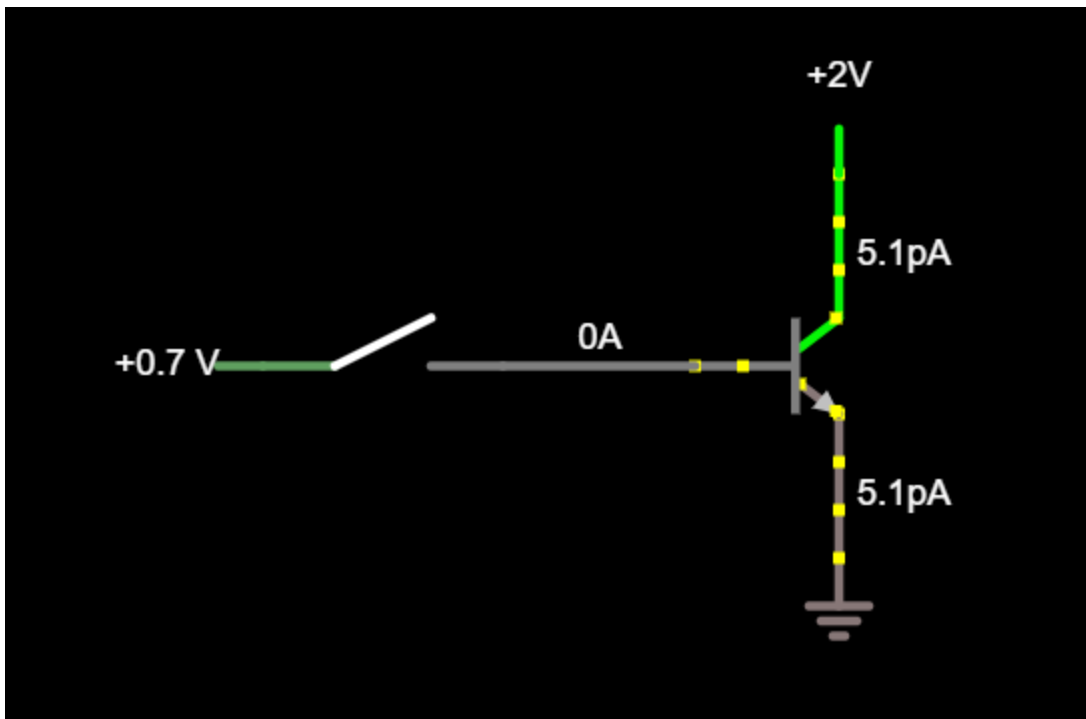
MAY 08, 2026

I'm not very keen on explanations:

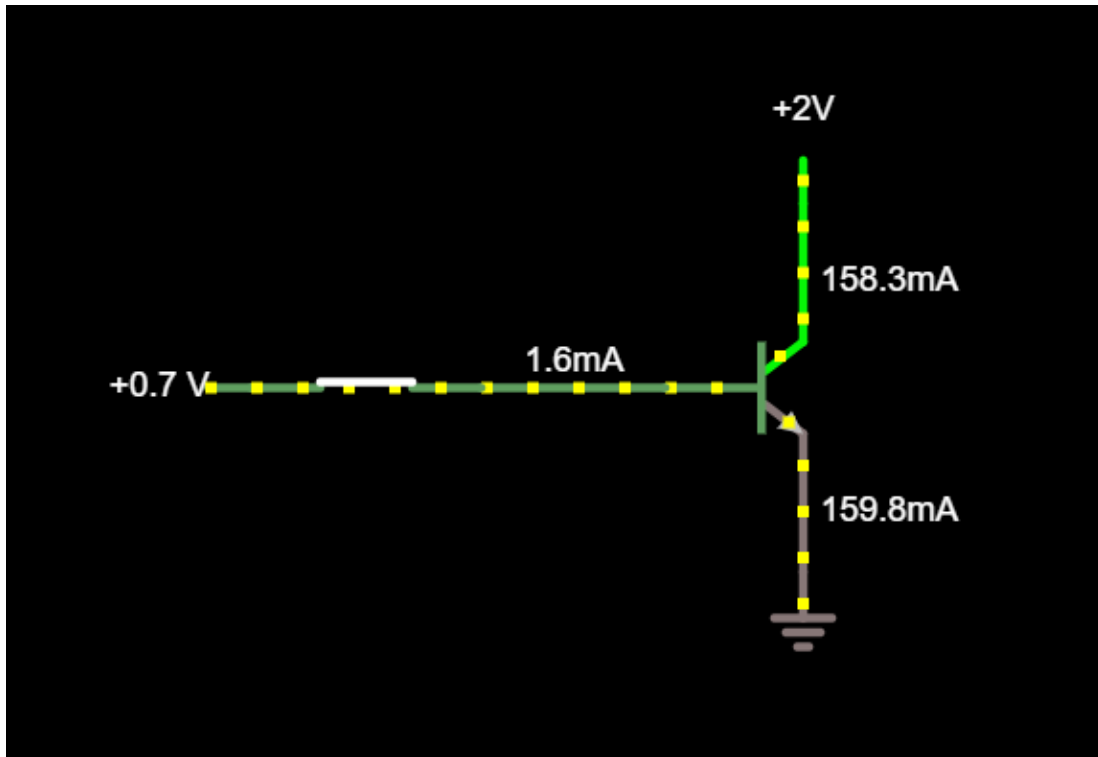


making something mysterious any easier to understand. So, I prefer a simulation since a picture tells the whole story what a lot of words fails to reach through to me:

OPEN SWITCH: OFF



CLOSED SWITCH: ON



$1.6\text{mA} + 158.3\text{mA} = 159.9\text{mA} \rightarrow$ They should equal.

But they don't. Instead, this summation equals 159.8mA probably due to a loss of 0.1mA due to heat dissipation?

Now, that was painless — wasn't it? ;-)

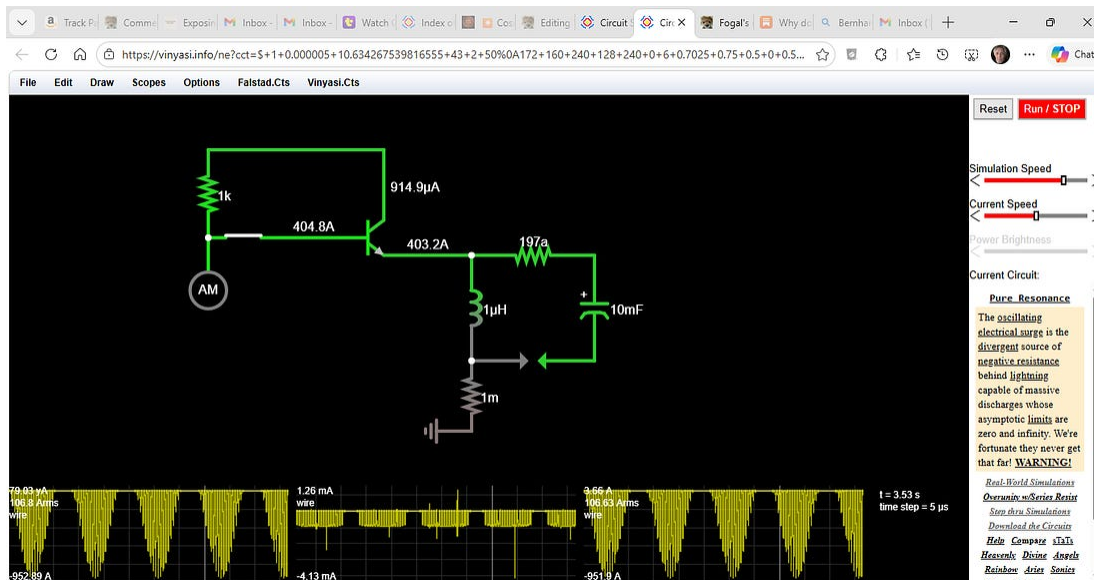
So, according to Tom Bearden's quotation in [yesterday's post](#):

Somehow, Bill's device sometimes blocks current flow in what would otherwise be a current controlled switch (according to the normal behavior of a transistor described in the video, above):

He patented the world's first dq/dt-blocking semiconductor ("degenerate" semiconductor or Fogal chip) that partially blocks normal current while continuing to pass the flow of voltage.

Now, how the heck does anyone manage to allow voltage to flow when voltage doesn't flow in the first place? Current flows; voltage stays put under normal conditions.

Tom...where are you when we need you? Oh, well ... It's time to whip out the simulator!



Base: 404.8A + Collector: 914.9µA = 404.8A + 0.0009149A = Emitter: 404.7990851A

But, the simulator is telling me that the correct answer is: 403.2A

That's a discrepancy of: 404.7990851A - 403.2A = 1.5990851A

Where did 1.6A go? It disappeared as heat!?

It's as if Bill has figured out how to reduce the efficiency of a transistor below what it was designed to function at. — Huh? Why do that?
Hmmm ...

Why would anyone want to throw away current while amassing voltage?

A surge protector can be made out of a **metal oxide varistor**, or **MOV**, which diverts the extra voltage.

When the voltage is low, an MOV does nothing. When voltage is too high, an MOV can conduct a lot of current to the ground line, thus eliminating the extra voltage.

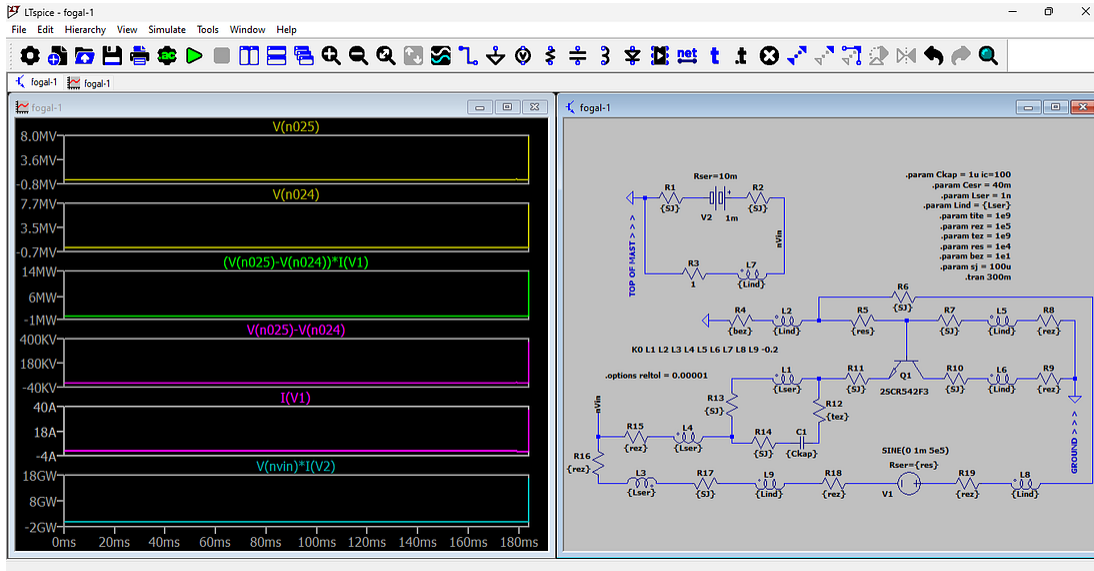
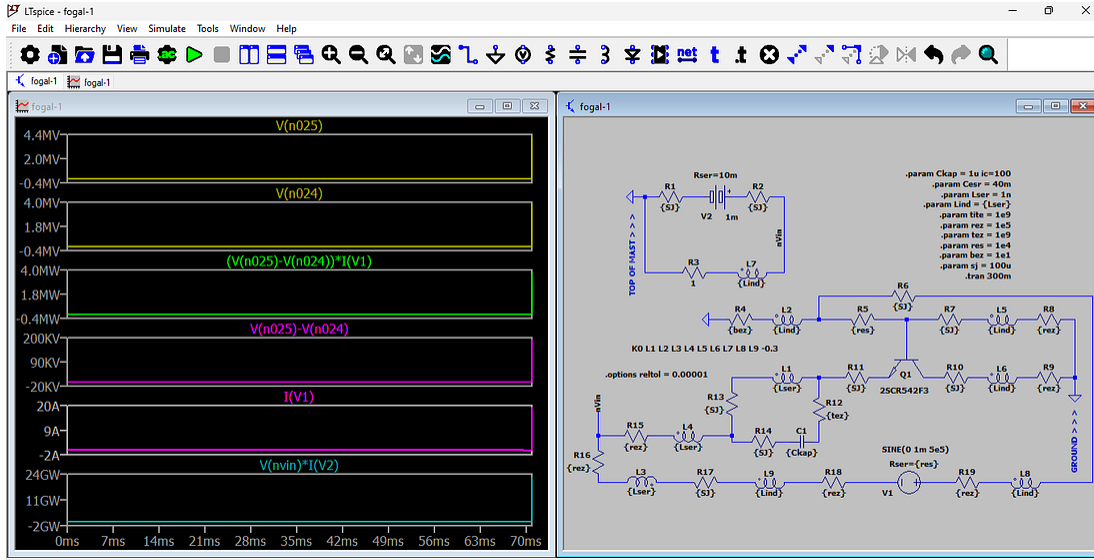
As soon as the extra current is diverted into the MOV and to ground, the voltage in the hot line returns to a normal level, causing the MOV's resistance to shoot up again. In this way, **the MOV only diverts the surge current**, while allowing the standard current to continue powering whatever machines are connected to the surge protector. Essentially, **the MOV acts as a pressure release valve, only opening when the voltage exceeds set values.**

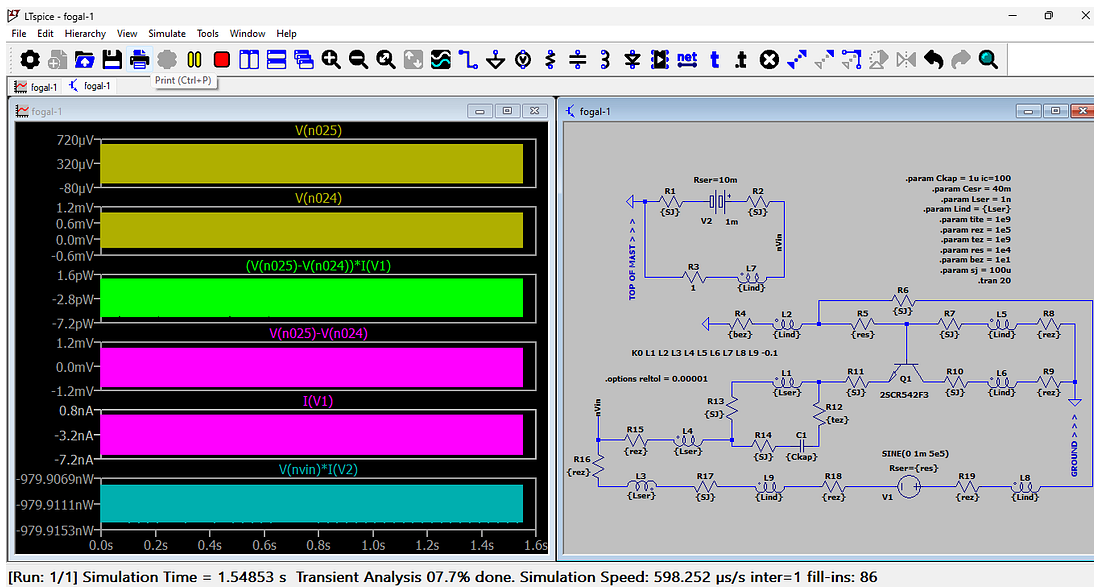
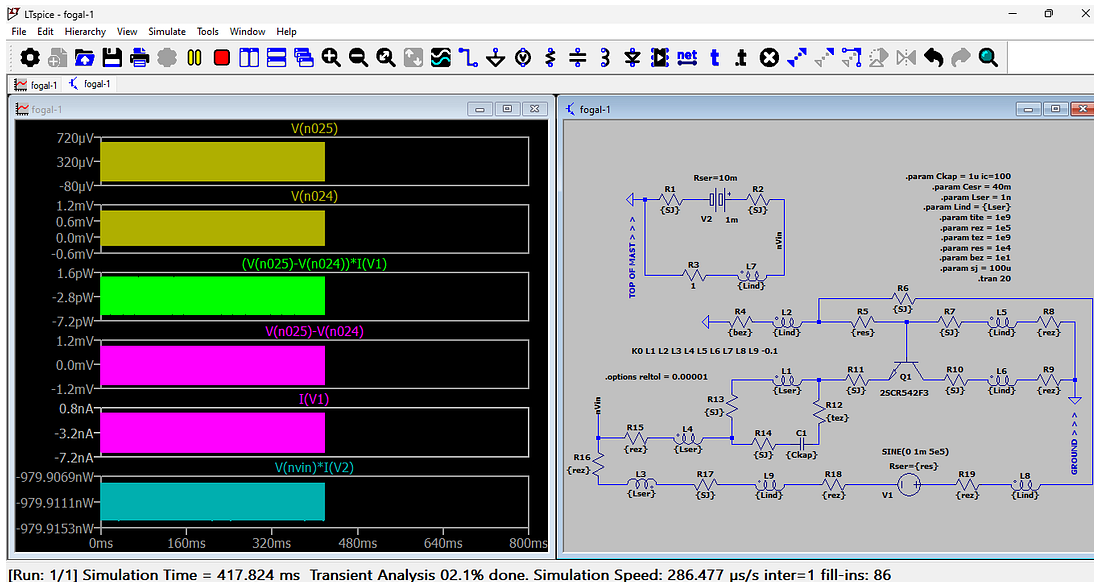
That quote, up-above, describes a voltage-controlled current switch which is intended to throw away current so as to reduce voltage — certainly not to amass more voltage!

But that's what makes Bill Fogal's invention a novel use for a conventional device contrary to its intentions.

I wanted to get that out of the way since transistors are new to me. I've never used them since I didn't understand them in the sense that I didn't know how to use them for my purposes. But Bill thinks like I do. And, so, he's found a way to use a transistor contrary to expectations and, thus, get very different results. Wow! Far out!

In case anyone has found fault with my choice of making two sets of resistances a huge Giga ohm ($1e9$) — these could have been larger, but I chose a Giga ohm as my upper bound assuming that it would be no big deal to string ten 100 Mega ohm, 1/4 watt, resistors in series since

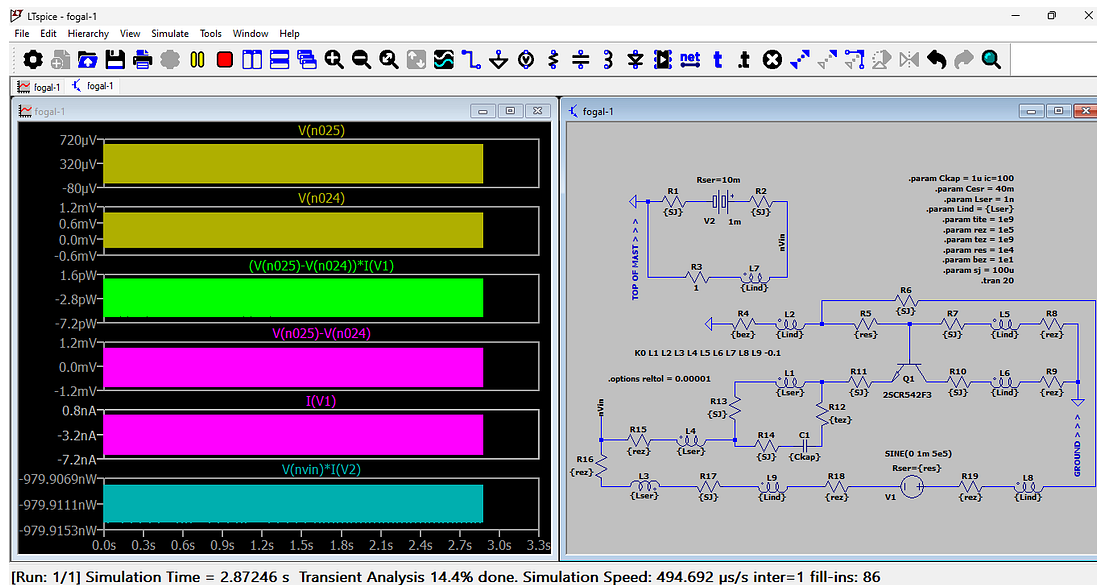




Since this is slow, and this is hogging my laptop's harddrive space, I'll switch to a higher coupling percentage after this run terminates for performing my analysis.

But, I guess, it should be obvious by now that any percentage of magnetic coupling will not prevent explosive overunity. Lower percentages will simply slow it down (by putting it off) and, thus, will achieve higher magnitudes before terminating the runtime with error messages since these errors are merely due to the simulator taking a

dim view of abrupt and drastic changes of amplitude, such as: when current and/or voltage suddenly explodes.



This is why a negative coupling coefficient is a must because Bill's Charge-Barrier is blocking current to amass voltage. So, that's what a negative coupling coefficient also contributes towards.

So, it's all good.

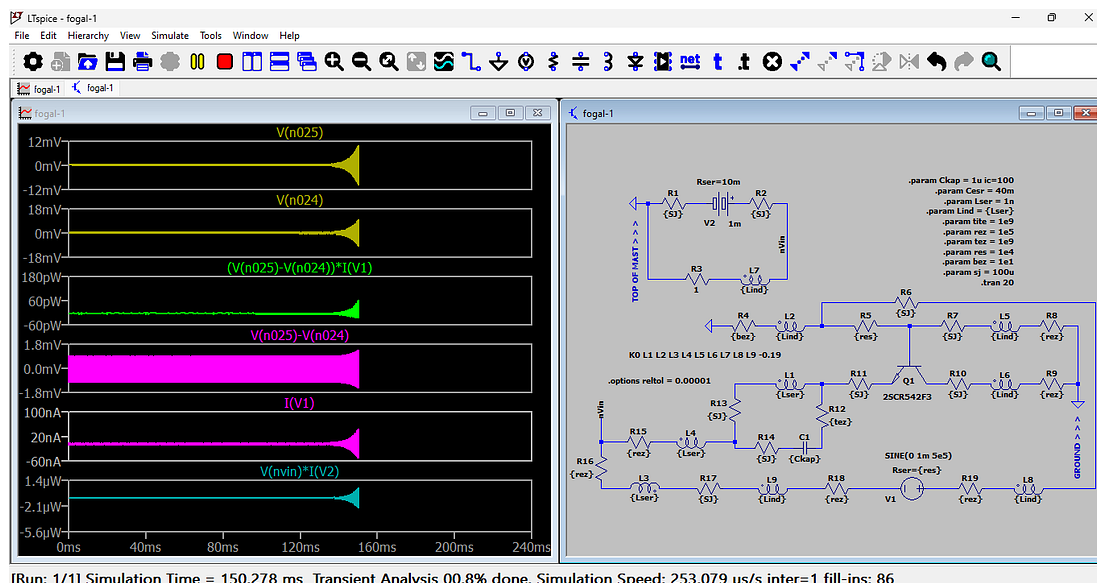
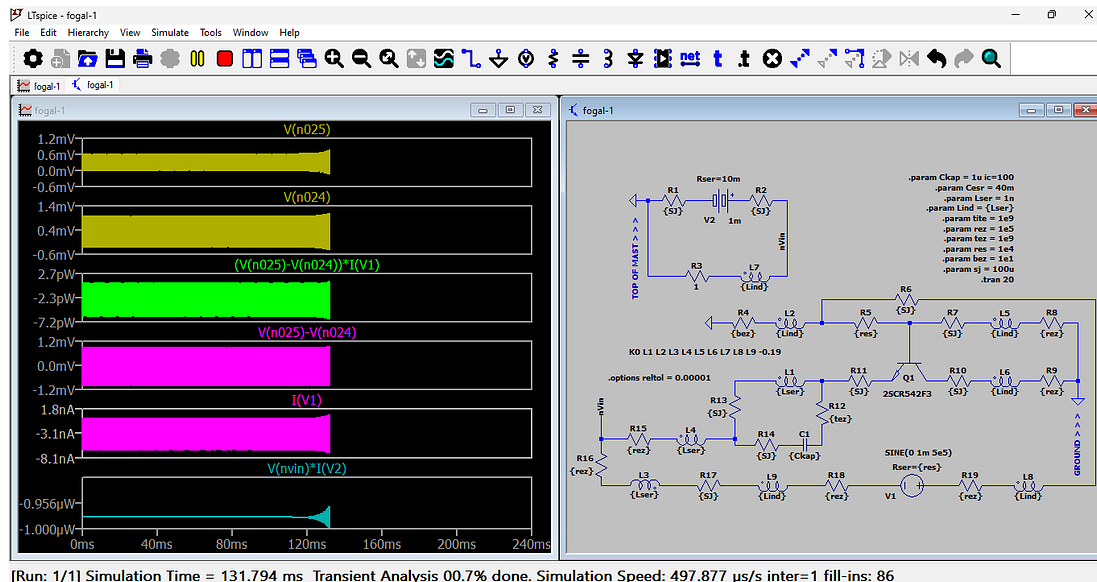
I also hope it's obvious to you that the "free energy" of nonlinear reactance is inherently unstable due to its chaotic nature. Normally, it's not as unstable as are these examples (which I cull from all of the lackluster possibilities) since it's these rare extreme jems which make my day!

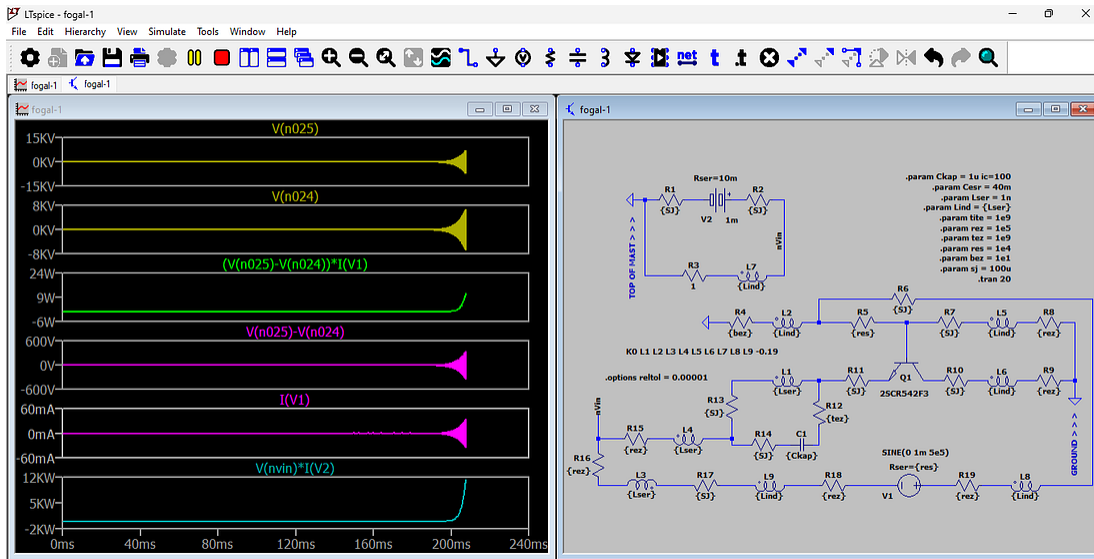
But, this is the price we will pay for accessing this unique avenue of energy acquisition rather than paying hard-earned money for a more stable system of energy procurement (such as what we already possess via the utility grid).

BTW, I chose to reduce the coupling coefficient since a negative coupling among coils tends to be of a poor absolute magnitude

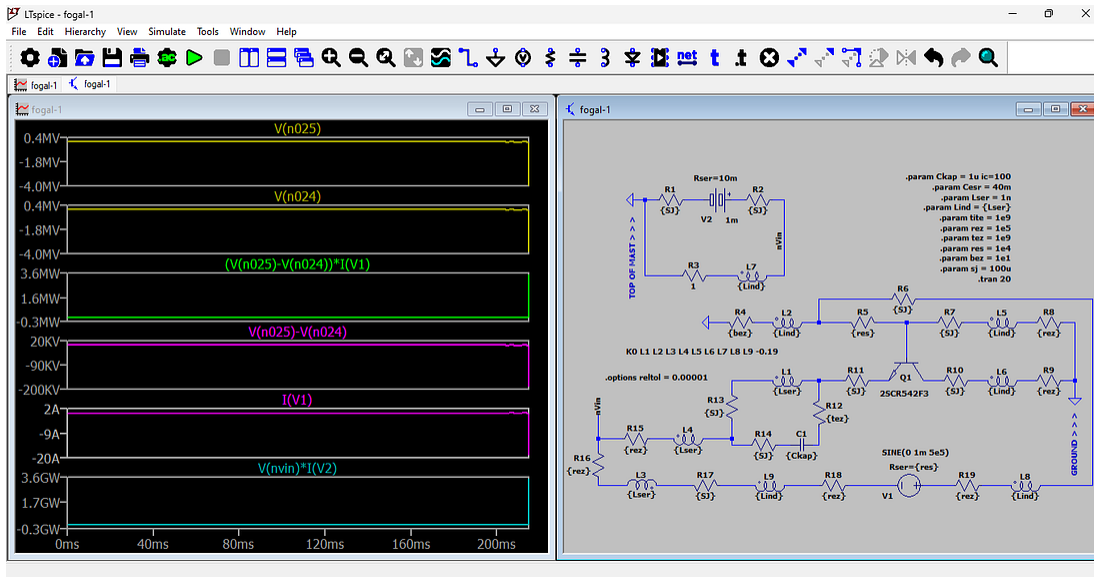
anyway. So, why not reduce its simulation on purpose?

I prematurely curtailed that run of -0.1 coupling since it was taking too long to show extreme results. It did manage to show a teensy result. Here's -0.19 coupling, instead:

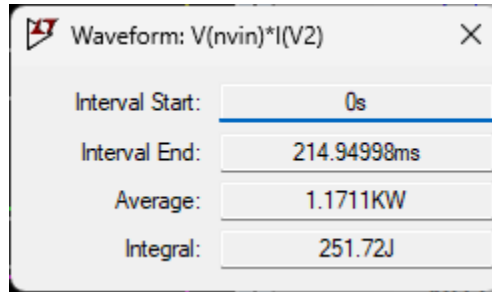
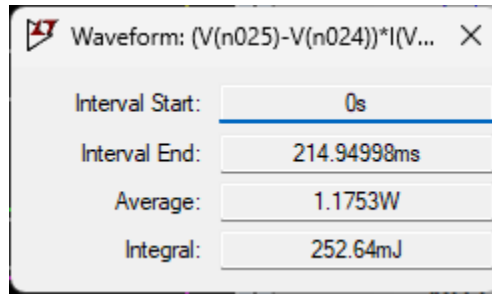




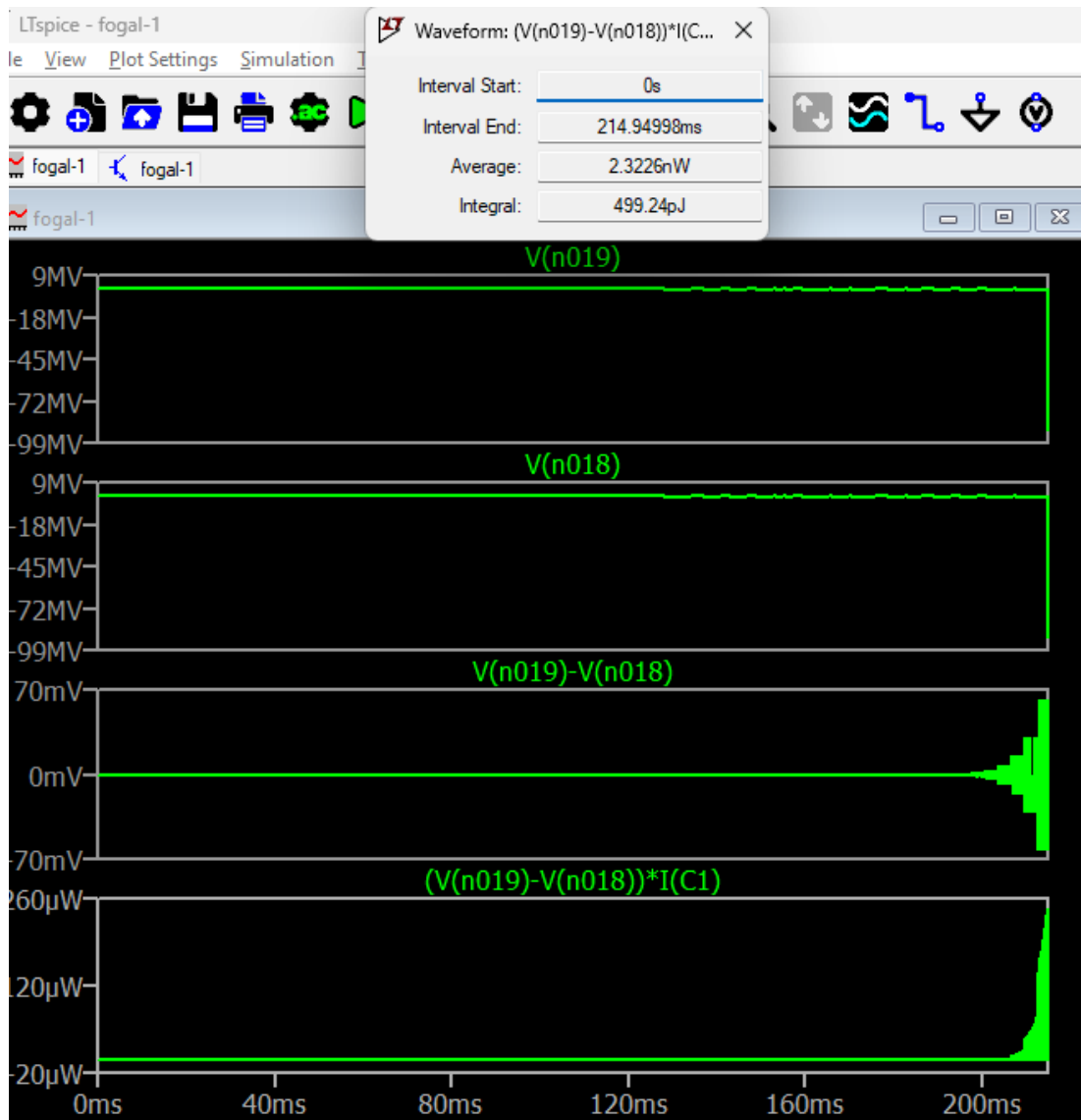
[Run: 1/1] Simulation Time = 207.503 ms Transient Analysis 01.0% done. Simulation Speed: 18.0907 μ s/s inter=2 fill-ins: 86



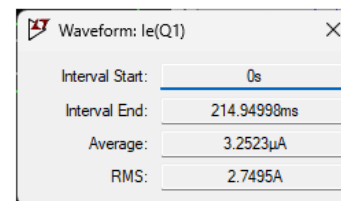
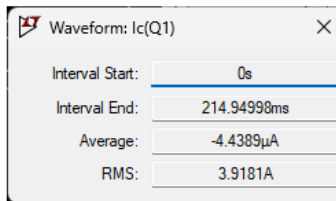
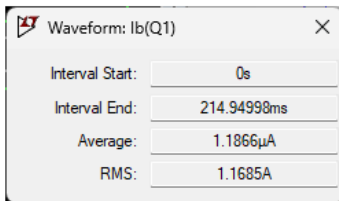
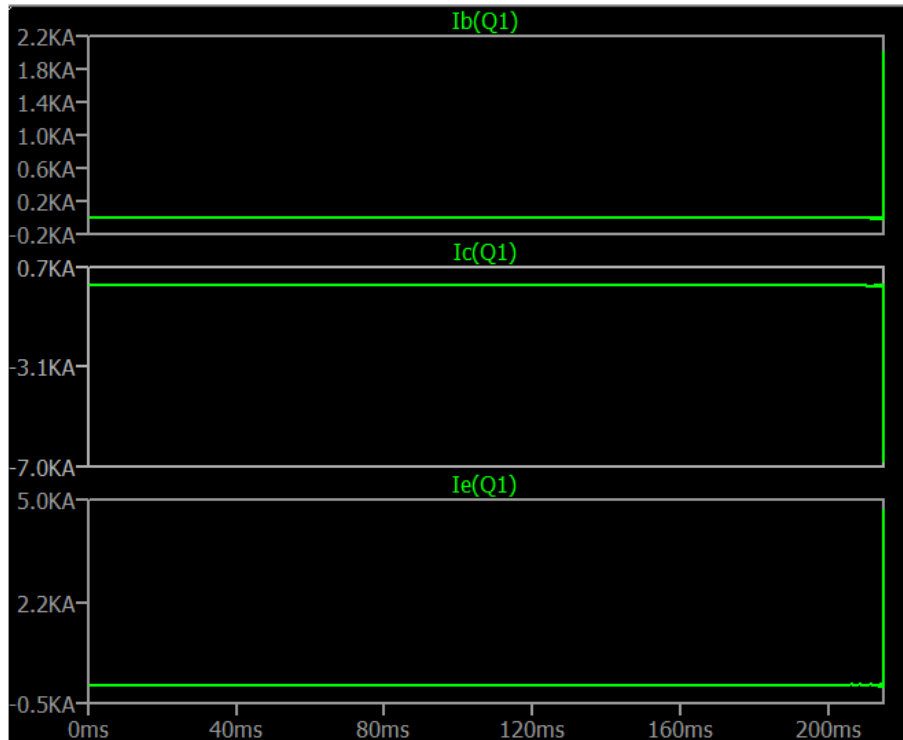
OK. That does it for that show. Now for the analysis starting with the wattage for V1 ...



So, positive watts for both voltage sources.



Positive watts for the capacitor.



Base: +1.1866μA + Collector: -4.4389μA != Emitter: -3.2523μA

Right Math; Wrong Answer!

The Correct Answer is:

+3.2523μA

This means that the transistor somehow inverted the polarity of the result, thus effectively converting an otherwise boring simulation into the “Free Energy

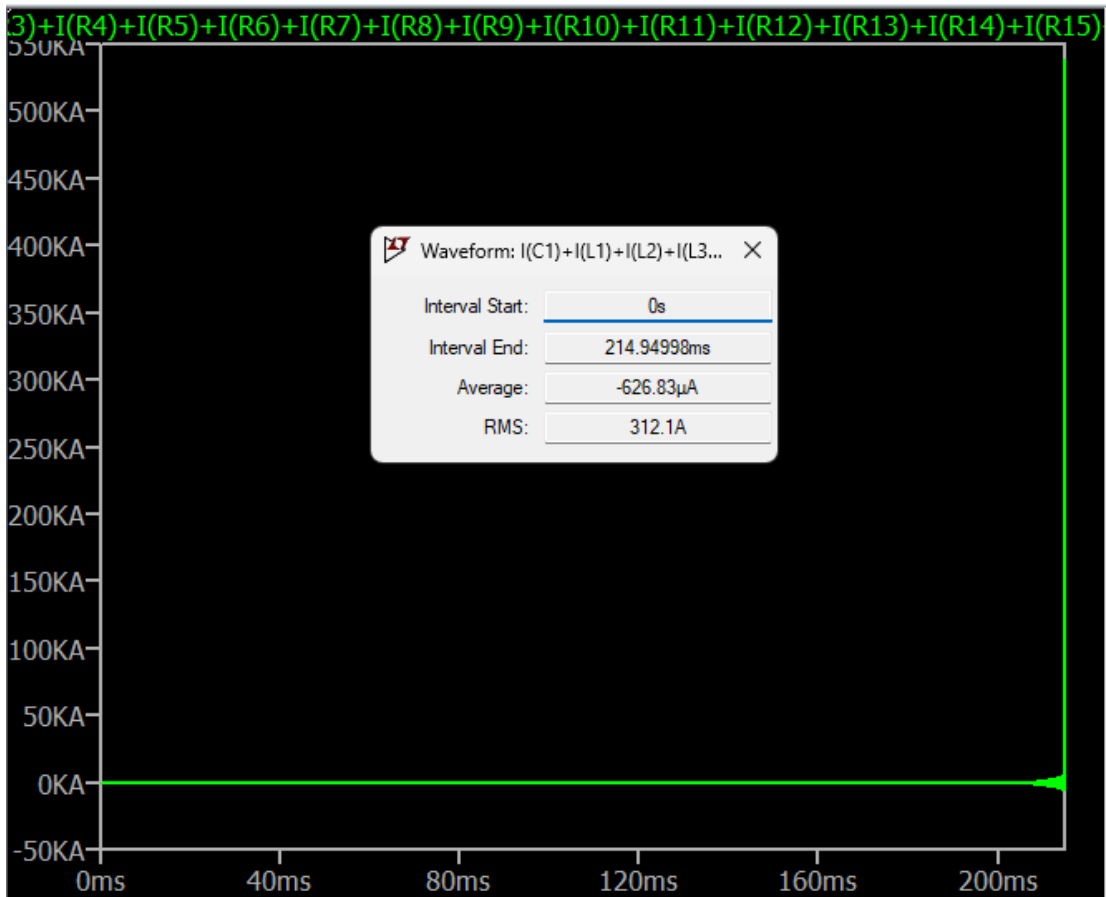
Generation of Power” in which we forget to give credit where credit is due.

How did it do that? It must have been the supporting elements of this circuit which gave the transistor no other choice but to conform to the arrangement of its support-team and the consequences, thereof.

It’s no small wonder that this combination of interactions, among all of these components, blasts off into an explosion.

We call this “Free Energy” due to our collective ignorance of Maxwellian physics as Maxwell intended it to be. Until we admit to our oversight, we will continue to debate an unnecessary argument. Just ask Paul ...

Let’s keep going with this and see where it leads to ...



All of the currents: loads plus sources, are supposed to equal zero. Negative 626.83 microamps is not a nearly zero response. A nearly zero response would be more like: 0.000000000000004A. This is too significant to be ignored.

And that's merely the averaged result. That's not including the RMS average which is even larger at 312.1 amps.

The first figure (the pure average; not the RMS average) indicates that this circuit has a surplus of two-thirds of a milliamp of current which it is generating (synthesizing) from where?

My critics would offer that is a numerical artifact of roundoff error.

At a reltol of 0.00001? A lower reltol would increase the likelihood of explosive results.

Netlist:

* D:\Documents\Sims\LTSpice\2026\05 - May\07\fogal-1.asc

* Generated by LTSpice 24.1.9 for Windows.

L1 N011 N010 {Lser} Rser={Lser}

R12 N019 N011 {tez}

R8 0 N009 {rez}

V1 N025 N024 SINE(0 1m 5e5) Rser={res}

R5 N004 N007 {res}

R15 nVin N016 {rez}

R9 0 N015 {rez}

R19 N026 N025 {rez}

R18 N023 N024 {rez}

R16 N020 nVin {rez}

V2 N002 N001 1m Rser=10m

R3 N003 0 1

R4 0 N006 {bez}

L2 N004 N006 {Lind} Rser={Lind}

L3 N020 N021 {Lser} Rser={Lser}

L4 N017 N016 {Lser} Rser={Lser}

L7 nVin N003 {Lind} Rser={Lind}

L5 N009 N008 {Lind} Rser={Lind}

L6 N015 N014 {Lind} Rser={Lind}

L8 N005 N026 {Lind} Rser={Lind}

L9 N023 N022 {Lind} Rser={Lind}

C1 N019 N018 {Ckap} Rser={Cesr}

Q1 N013 N007 N012 0 2SCR542F3

R2 nVin N002 {SJ}

R1 N001 0 {SJ}

R17 N022 N021 {SJ}

R14 N018 N017 {SJ}

R7 N008 N007 {SJ}

R10 N014 N013 {SJ}

R13 N017 N010 {SJ}

R6 N005 N004 {SJ}

R11 N012 N011 {SJ}

.model NPN NPN

.model PNP PNP

```
.lib C:\Users\vinya\AppData\Local\LTspice\lib\cmp\standard.bjt

.param Ckap = 1u ic=100

.param Cesr = 40m

.param Lser = 1n

.param Lind = {Lser}

.param tite = 1e9

.param rez = 1e5

.param tez = 1e9

.param res = 1e4

.param bez = 1e1

.param sj = 100u

.tran 20

K0 L1 L2 L3 L4 L5 L6 L7 L8 L9 -0.19

.options reltol = 0.00001

* GROUND > > >

* TOP OF MAST > > >

.backanno

.end
```

[Download the circuit here.](#)
